

Anti-RBM6 antibody (991-1040 aa) (STJ92686)

STJ92686

GENERAL INFORMATION

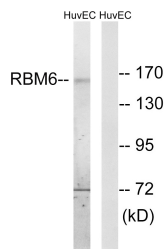
Product Type	Primary antibodies
Short Description	Rabbit polyclonal antibody anti-RNA-binding protein 6 (991-1040 aa) is suitable for use in Western Blot, Immunohistochemistry, Immunofluorescence and ELISA research applications.
Applications	WB/IHC/IF/ELISA
Host/Source	Rabbit
Reactivity	Human/Mouse

PRODUCT PROPERTIES

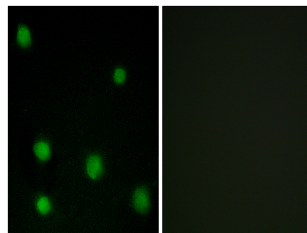
Clonality	Polyclonal
Clone ID	
Concentration	1 mg/mL
Conjugation	Unconjugated
Purification	The antibody was affinity-purified from rabbit antiserum by affinity-chromatography using epitope-specific immunogen.
Dilution Range	WB 1:500-1:2000 IHC 1:100-1:300 IF 1:200-1:1000 ELISA 1:20000
Formulation	Liquid in PBS containing 50% Glycerol, 0.5% BSA and 0.02% Sodium Azide.
Isotype	IgG
Storage Instruction	Store at -20°C for up to 1 year from the date of receipt, and avoid repeat freeze-thaw cycles.

TARGET INFORMATION

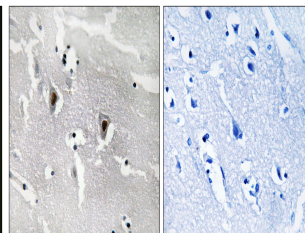
Gene ID	10180
Gene Symbol	RBM6
Uniprot ID	RBM6_HUMAN
Immunogen	The antiserum was produced against synthesized peptide derived from the human RBM6 at the amino acid range 991-1040
Immunogen Region	991-1040 aa
Specificity	DEF-3 Polyclonal Antibody detects endogenous levels of DEF-3 protein.
Immunogen Sequence	



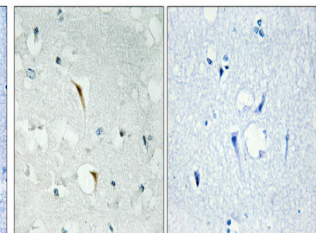
Western blot analysis of lysates from HUVEC cells, using RBM6 Antibody. The lane on the right is blocked with the synthesized peptide.



Immunofluorescence analysis of COS7 cells, using RBM6 Antibody. The picture on the right is blocked with the synthesized peptide.



Immunohistochemistry analysis of paraffin-embedded human brain tissue, using RBM6 Antibody. The picture on the right is blocked with the synthesized peptide.



Immunohistochemical analysis of paraffin-embedded Human brain. Antibody was diluted at 1:100 (4A°C overnight). High-pressure and temperature Tris-EDTA, pH8.0 was used for antigen retrieval. Negative control (right) obtained from antibody was pre-absorbed by immunogen peptide.