

## Anti-DDX3 antibody (14-63 aa) (STJ92677)

STJ92677

### GENERAL INFORMATION

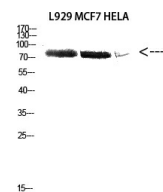
|                          |                                                                                                                                                                                       |
|--------------------------|---------------------------------------------------------------------------------------------------------------------------------------------------------------------------------------|
| <b>Product Type</b>      | Primary antibodies                                                                                                                                                                    |
| <b>Short Description</b> | Rabbit polyclonal antibody anti-ATP-dependent RNA helicase DDX3X and ATP-dependent RNA helicase DDX3Y (14-63 aa) is suitable for use in Western Blot and ELISA research applications. |
| <b>Applications</b>      | WB/ELISA                                                                                                                                                                              |
| <b>Host/Source</b>       | Rabbit                                                                                                                                                                                |
| <b>Reactivity</b>        | Human/Mouse                                                                                                                                                                           |

### PRODUCT PROPERTIES

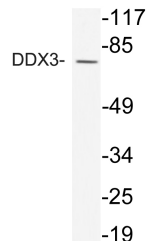
|                       |                                                                                                                       |
|-----------------------|-----------------------------------------------------------------------------------------------------------------------|
| <b>Clonality</b>      | Polyclonal                                                                                                            |
| <b>Clone ID</b>       |                                                                                                                       |
| <b>Concentration</b>  | 1 mg/mL                                                                                                               |
| <b>Conjugation</b>    | Unconjugated                                                                                                          |
| <b>Purification</b>   | The antibody was affinity-purified from rabbit antiserum by affinity-chromatography using epitope-specific immunogen. |
| <b>Dilution Range</b> | WB 1:500-1:2000<br>ELISA 1:10000                                                                                      |
| <b>Formulation</b>    | Liquid in PBS containing 50% Glycerol, 0.5% BSA and 0.02% Sodium Azide.                                               |
| <b>Isotype</b>        | IgG                                                                                                                   |
| <b>Storage</b>        | Store at -20°C for up to 1 year from the date of receipt, and avoid repeat freeze-thaw cycles.                        |
| <b>Instruction</b>    |                                                                                                                       |

### TARGET INFORMATION

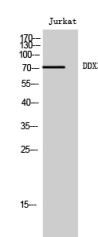
|                           |                                                                                                                         |
|---------------------------|-------------------------------------------------------------------------------------------------------------------------|
| <b>Gene ID</b>            | <a href="#">1654</a><br><a href="#">8653</a>                                                                            |
| <b>Gene Symbol</b>        | <a href="#">DDX3X</a><br><a href="#">DDX3Y</a>                                                                          |
| <b>Uniprot ID</b>         | <a href="#">DDX3X_HUMAN</a><br><a href="#">DDX3Y_HUMAN</a>                                                              |
| <b>Immunogen</b>          | The antiserum was produced against synthesized peptide derived from N-terminal human DDX3 at the amino acid range 14-63 |
| <b>Immunogen Region</b>   | 14-63 aa                                                                                                                |
| <b>Specificity</b>        | DDX3 Polyclonal Antibody detects endogenous levels of DDX3 protein.                                                     |
| <b>Immunogen Sequence</b> |                                                                                                                         |



Western blot analysis of L929 MCF7 HELA cells using Anti-DDX3 antibody diluted at 2000. Secondary antibody was diluted at 1:20000



Western blot analysis of lysate from Jurkat cells, using DDX3 antibody.



Western blot analysis of Jurkat cells using DDX3 Polyclonal Antibody diluted at 1/4 2000

This product is suitable for in-vitro studies under the RESEARCH USE ONLY [RUO] licence. This product must not be used as for diagnostic or other medical purposes.  
St John's Laboratory Ltd, Knowledge Dock Business Centre, University Way, London, E16 2RD | Tel: 0208 223 3081