

Anti-DDX3X antibody (466-515 aa) (STJ92676)

STJ92676

GENERAL INFORMATION

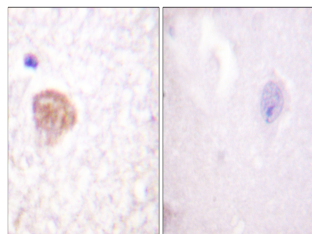
Product Type	Primary antibodies
Short Description	Rabbit polyclonal antibody anti-ATP-dependent RNA helicase DDX3X (466-515 aa) is suitable for use in Western Blot, Immunohistochemistry, Immunofluorescence and ELISA research applications.
Applications	WB/IHC/IF/ELISA
Host/Source	Rabbit
Reactivity	Human/Mouse/Rat

PRODUCT PROPERTIES

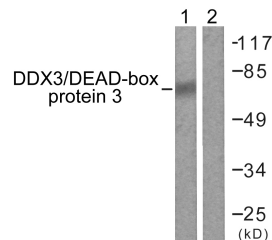
Clonality	Polyclonal
Clone ID	
Concentration	1 mg/mL
Conjugation	Unconjugated
Purification	The antibody was affinity-purified from rabbit antiserum by affinity-chromatography using epitope-specific immunogen.
Dilution Range	WB 1:500-1:2000 IHC 1:100-1:300 ELISA 1:10000 IF 1:50-200
Formulation	Liquid in PBS containing 50% Glycerol, 0.5% BSA and 0.02% Sodium Azide.
Isotype	IgG
Storage Instruction	Store at -20°C for up to 1 year from the date of receipt, and avoid repeat freeze-thaw cycles.

TARGET INFORMATION

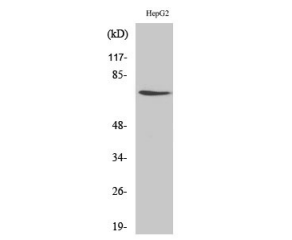
Gene ID	1654
Gene Symbol	DDX3X
Uniprot ID	DDX3X_HUMAN
Immunogen	The antiserum was produced against synthesized peptide derived from the human DDX3/DEAD-box Protein 3 at the amino acid range 466-515
Immunogen Region	466-515 aa
Specificity	DDX3 Polyclonal Antibody detects endogenous levels of DDX3 protein.
Immunogen Sequence	



Immunohistochemistry analysis of paraffin-embedded human brain tissue, using DDX3/DEAD-box Protein 3 Antibody. The picture on the right is blocked with the synthesized peptide.



Western blot analysis of lysates from HepG2 cells, using DDX3/DEAD-box Protein 3 Antibody. The lane on the right is blocked with the synthesized peptide.



Western blot analysis of various cells using DDX3 Polyclonal Antibody