

Anti-CCAR2 antibody (431-480 aa) (STJ92659)

STJ92659

GENERAL INFORMATION

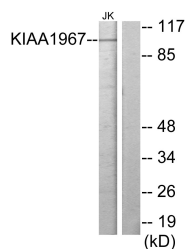
Product Type	Primary antibodies
Short Description	Rabbit polyclonal antibody anti-Cell cycle and apoptosis regulator protein 2 (431-480 aa) is suitable for use in Western Blot, Immunohistochemistry, Immunofluorescence and ELISA research applications.
Applications	WB/IHC/IF/ELISA
Host/Source	Rabbit
Reactivity	Human/Rat/Mouse

PRODUCT PROPERTIES

Clonality	Polyclonal
Clone ID	
Concentration	1 mg/mL
Conjugation	Unconjugated
Purification	The antibody was affinity-purified from rabbit antiserum by affinity-chromatography using epitope-specific immunogen.
Dilution	WB 1:500-1:2000
Range	ELISA 1:20000 IF 1:50-200
Formulation	Liquid in PBS containing 50% Glycerol, 0.5% BSA and 0.02% Sodium Azide.
Isotype	IgG
Storage Instruction	Store at -20°C for up to 1 year from the date of receipt, and avoid repeat freeze-thaw cycles.

TARGET INFORMATION

Gene ID	57805
Gene Symbol	CCAR2
Uniprot ID	CCAR2_HUMAN
Immunogen	The antiserum was produced against synthesized peptide derived from the human K1the amino acid1967 at the amino acid range 431-480
Immunogen Region	431-480 aa
Specificity	DBC-1 Polyclonal Antibody detects endogenous levels of DBC-1 protein.
Immunogen Sequence	



Western blot analysis of lysates from Jurkat cells, using KIAA1967 Antibody. The lane on the right is blocked with the synthesized peptide.