

## Anti-DAPK1 antibody (274-323 aa) (STJ92652)

STJ92652

### GENERAL INFORMATION

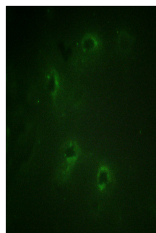
<b>Product Type</b>	Primary antibodies
<b>Short Description</b>	Rabbit polyclonal antibody anti-Death-associated protein kinase 1 (274-323 aa) is suitable for use in Western Blot, Immunohistochemistry, Immunofluorescence and ELISA research applications.
<b>Applications</b>	WB/IHC/IF/ELISA
<b>Host/Source</b>	Rabbit
<b>Reactivity</b>	Human/Mouse

### PRODUCT PROPERTIES

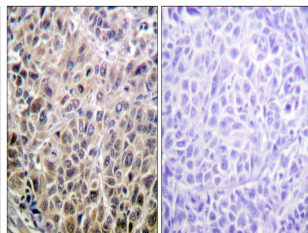
<b>Clonality</b>	Polyclonal
<b>Clone ID</b>	
<b>Concentration</b>	1 mg/mL
<b>Conjugation</b>	Unconjugated
<b>Purification</b>	The antibody was affinity-purified from rabbit antiserum by affinity-chromatography using epitope-specific immunogen.
<b>Dilution Range</b>	WB 1:500-2000 IHC 1:100-1:300 IF 1:200-1:1000 ELISA 1:5000
<b>Formulation</b>	Liquid in PBS containing 50% Glycerol, 0.5% BSA and 0.02% Sodium Azide.
<b>Isotype</b>	IgG
<b>Storage Instruction</b>	Store at -20°C for up to 1 year from the date of receipt, and avoid repeat freeze-thaw cycles.

### TARGET INFORMATION

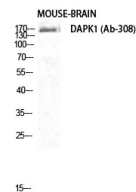
<b>Gene ID</b>	1612
<b>Gene Symbol</b>	DAPK1
<b>Uniprot ID</b>	DAPK1_HUMAN
<b>Immunogen</b>	The antiserum was produced against synthesized peptide derived from the human DAPK1 at the amino acid range 274-323
<b>Immunogen Region</b>	274-323 aa
<b>Specificity</b>	DAPK1 Polyclonal Antibody detects endogenous levels of DAPK1 protein.
<b>Immunogen Sequence</b>	



Immunofluorescence analysis of COS7 cells, using DAPK1 Antibody. The picture on the right is blocked with the synthesized peptide.



Immunohistochemistry analysis of paraffin-embedded human liver carcinoma tissue, using DAPK1 Antibody. The picture on the right is blocked with the synthesized peptide.



Western blot analysis of mouse brain cells using DAPK1 Polyclonal Antibody diluted at 1:1000