

Anti-YTHDF1 antibody (1-50 aa) (STJ92648)

STJ92648

GENERAL INFORMATION

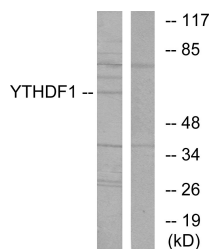
Product Type	Primary antibodies
Short Description	Rabbit polyclonal antibody anti-YTH domain-containing family protein 1 (1-50 aa) is suitable for use in Western Blot, Immunohistochemistry, Immunofluorescence and ELISA research applications.
Applications	WB/IHC/IF/ELISA
Host/Source	Rabbit
Reactivity	Human/Mouse/Rat

PRODUCT PROPERTIES

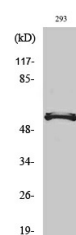
Clonality	Polyclonal
Clone ID	
Concentration	1 mg/mL
Conjugation	Unconjugated
Purification	The antibody was affinity-purified from rabbit antiserum by affinity-chromatography using epitope-specific immunogen.
Dilution Range	WB 1:500-1:2000 IHC 1:100-1:300 ELISA 1:5000 IF 1:50-200
Formulation	Liquid in PBS containing 50% Glycerol, 0.5% BSA and 0.02% Sodium Azide.
Isotype	IgG
Storage Instruction	Store at -20°C for up to 1 year from the date of receipt, and avoid repeat freeze-thaw cycles.

TARGET INFORMATION

Gene ID	54915
Gene Symbol	YTHDF1
Uniprot ID	YTHD1_HUMAN
Immunogen	The antiserum was produced against synthesized peptide derived from the human YTHDF1 at the amino acid range 1-50
Immunogen Region	1-50 aa
Specificity	DACA-1 Polyclonal Antibody detects endogenous levels of DACA-1 protein.
Immunogen Sequence	



Western blot analysis of lysates from 293 cells, using YTHDF1 Antibody. The lane on the right is blocked with the synthesized peptide.



Western blot analysis of various cells using DACA-1 Polyclonal Antibody