

Anti-KRT8 antibody (401-450 aa) (STJ92638)

STJ92638

GENERAL INFORMATION

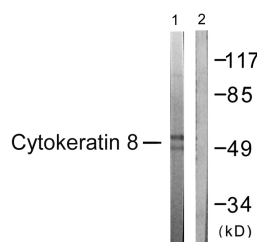
| | |
|--------------------------|---|
| Product Type | Primary antibodies |
| Short Description | Rabbit polyclonal antibody anti-Keratin, type II cytoskeletal 8 (401-450 aa) is suitable for use in Western Blot, Immunohistochemistry, Immunofluorescence and ELISA research applications. |
| Applications | WB/IHC/IF/ELISA |
| Host/Source | Rabbit |
| Reactivity | Human/Mouse/Rat |

PRODUCT PROPERTIES

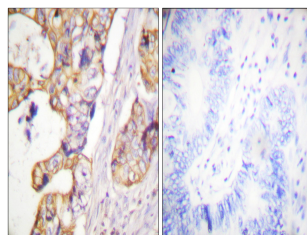
| | |
|----------------------------|---|
| Clonality | Polyclonal |
| Clone ID | |
| Concentration | 1 mg/mL |
| Conjugation | Unconjugated |
| Purification | The antibody was affinity-purified from rabbit antiserum by affinity-chromatography using epitope-specific immunogen. |
| Dilution Range | WB 1:500-1:2000 IHC 1:100-1:300 IF 1:200-1:1000 ELISA 1:5000 |
| Formulation | Liquid in PBS containing 50% Glycerol, 0.5% BSA and 0.02% Sodium Azide. |
| Isotype | IgG |
| Storage Instruction | Store at -20°C for up to 1 year from the date of receipt, and avoid repeat freeze-thaw cycles. |

TARGET INFORMATION

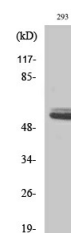
| | |
|---------------------------|---|
| Gene ID | 3856 |
| Gene Symbol | KRT8 |
| Uniprot ID | K2C8_HUMAN |
| Immunogen | The antiserum was produced against synthesized peptide derived from the human Keratin 8 at the amino acid range 401-450 |
| Immunogen Region | 401-450 aa |
| Specificity | Cytokeratin 8 Polyclonal Antibody detects endogenous levels of Cytokeratin 8 protein. |
| Immunogen Sequence | |



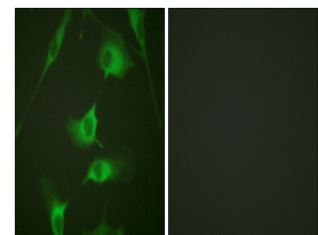
Western blot analysis of lysates from 293 cells, treated with EGF 200ng/ml 30', using Keratin 8 Antibody. The lane on the right is blocked with the synthesized peptide.



Immunohistochemistry analysis of paraffin-embedded human colon carcinoma tissue, using Keratin 8 Antibody. The picture on the right is blocked with the synthesized peptide.



Western blot analysis of 293 cells using Cytokeratin 8 Polyclonal Antibody diluted at 1:1000



Immunofluorescence analysis of HeLa cells, using Keratin 8 Antibody. The picture on the right is blocked with the synthesized peptide.