

Anti-KRT20 antibody (375-424 aa) (STJ92635)

STJ92635

GENERAL INFORMATION

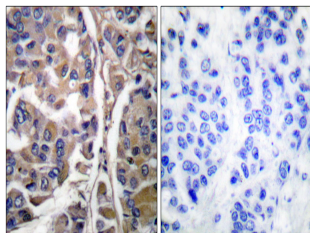
| | |
|--------------------------|---|
| Product Type | Primary antibodies |
| Short Description | Rabbit polyclonal antibody anti-Keratin, type I cytoskeletal 20 (375-424 aa) is suitable for use in Western Blot, Immunohistochemistry, Immunofluorescence and ELISA research applications. |
| Applications | WB/IHC/IF/ELISA |
| Host/Source | Rabbit |
| Reactivity | Human/Mouse/Rat |

PRODUCT PROPERTIES

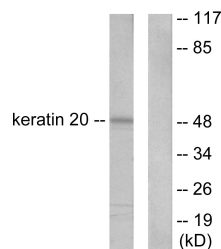
| | |
|----------------------------|---|
| Clonality | Polyclonal |
| Clone ID | |
| Concentration | 1 mg/mL |
| Conjugation | Unconjugated |
| Purification | The antibody was affinity-purified from rabbit antiserum by affinity-chromatography using epitope-specific immunogen. |
| Dilution Range | WB 1:500-1:2000 IHC 1:100-1:300 IF 1:200-1:1000 ELISA 1:10000 |
| Formulation | Liquid in PBS containing 50% Glycerol, 0.5% BSA and 0.02% Sodium Azide. |
| Isotype | IgG |
| Storage Instruction | Store at -20°C for up to 1 year from the date of receipt, and avoid repeat freeze-thaw cycles. |

TARGET INFORMATION

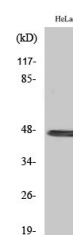
| | |
|---------------------------|--|
| Gene ID | 54474 |
| Gene Symbol | KRT20 |
| Uniprot ID | K1C20_HUMAN |
| Immunogen | The antiserum was produced against synthesized peptide derived from the human Keratin 20 at the amino acid range 375-424 |
| Immunogen Region | 375-424 aa |
| Specificity | Cytokeratin 20 Polyclonal Antibody detects endogenous levels of Cytokeratin 20 protein. |
| Immunogen Sequence | |



Immunohistochemistry analysis of paraffin-embedded human breast carcinoma tissue, using Keratin 20 Antibody. The picture on the right is blocked with the synthesized peptide.



Western blot analysis of lysates from HeLa cells, using Keratin 20 Antibody. The lane on the right is blocked with the synthesized peptide.



Western blot analysis of various cells using Cytokeratin 20 Polyclonal Antibody diluted at 1:500