

Anti-KRT19 antibody (231-280 aa) (STJ92634)

STJ92634

GENERAL INFORMATION

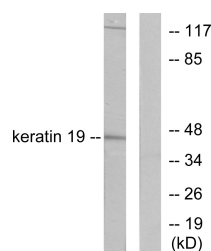
Product Type	Primary antibodies
Short Description	Rabbit polyclonal antibody anti-Keratin, type I cytoskeletal 19 (231-280 aa) is suitable for use in Western Blot, Immunohistochemistry, Immunofluorescence and ELISA research applications.
Applications	WB/IHC/IF/ELISA
Host/Source	Rabbit
Reactivity	Human/Mouse/Rat

PRODUCT PROPERTIES

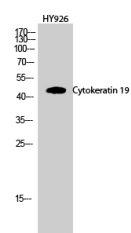
Clonality	Polyclonal
Clone ID	
Concentration	1 mg/mL
Conjugation	Unconjugated
Purification	The antibody was affinity-purified from rabbit antiserum by affinity-chromatography using epitope-specific immunogen.
Dilution Range	WB 1:500-1:2000 IHC 1:100-1:300 IF 1:200-1:1000 ELISA 1:10000
Formulation	Liquid in PBS containing 50% Glycerol, 0.5% BSA and 0.02% Sodium Azide.
Isotype	IgG
Storage Instruction	Store at -20°C for up to 1 year from the date of receipt, and avoid repeat freeze-thaw cycles.

TARGET INFORMATION

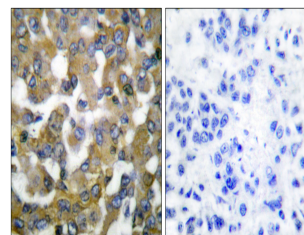
Gene ID	3880
Gene Symbol	KRT19
Uniprot ID	K1C19_HUMAN
Immunogen	The antiserum was produced against synthesized peptide derived from the human Keratin 19 at the amino acid range 231-280
Immunogen Region	231-280 aa
Specificity	Cytokeratin 19 Polyclonal Antibody detects endogenous levels of Cytokeratin 19 protein.
Immunogen Sequence	



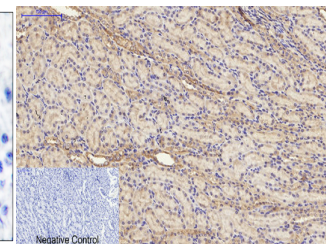
Western blot analysis of lysates from LOVO cells, using Keratin 19 Antibody. The lane on the right is blocked with the synthesized peptide.



Western blot analysis of HY926 cells using Cytokeratin 19 Polyclonal Antibody diluted at 1:1000



Immunohistochemistry analysis of paraffin-embedded human breast carcinoma tissue, using Keratin 19 Antibody. The picture on the right is blocked with the synthesized peptide.



Immunohistochemical analysis of paraffin-embedded Rat-kidney tissue. 1. Cytokeratin 19 Polyclonal Antibody was diluted at 1:200 (4A°C, overnight). 2. Sodium citrate pH 6.0 was used for antibody retrieval (>98A°C, 20min). 3. Secondary antibody was diluted at 1:200 (room temperature, 30min). Negative control was used by secondary antibody only.

This product is suitable for in-vitro studies under the RESEARCH USE ONLY [RUO] licence. This product must not be used as for diagnostic or other medical purposes.
St John's Laboratory Ltd, Knowledge Dock Business Centre, University Way, London, E16 2RD | Tel: 0208 223 3081