

Anti-KRT13 antibody (233-282 aa) (STJ92625)

STJ92625

GENERAL INFORMATION

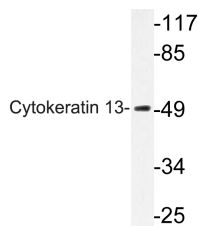
Product Type	Primary antibodies
Short Description	Rabbit polyclonal antibody anti-Keratin, type I cytoskeletal 13 (233-282 aa) is suitable for use in Western Blot, Immunohistochemistry, Immunofluorescence and ELISA research applications.
Applications	WB/IHC/IF/ELISA
Host/Source	Rabbit
Reactivity	Human/Mouse/Rat

PRODUCT PROPERTIES

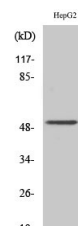
Clonality	Polyclonal
Clone ID	
Concentration	1 mg/mL
Conjugation	Unconjugated
Purification	The antibody was affinity-purified from rabbit antiserum by affinity-chromatography using epitope-specific immunogen.
Dilution Range	WB 1:500-1:2000 IHC 1:100-1:300 ELISA 1:5000 IF 1:50-200
Formulation	Liquid in PBS containing 50% Glycerol, 0.5% BSA and 0.02% Sodium Azide.
Isotype	IgG
Storage Instruction	Store at -20°C for up to 1 year from the date of receipt, and avoid repeat freeze-thaw cycles.

TARGET INFORMATION

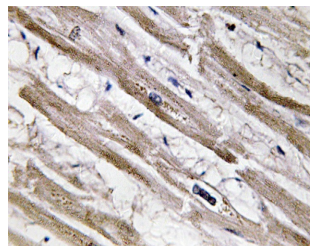
Gene ID	3860
Gene Symbol	KRT13
Uniprot ID	K1C13_HUMAN
Immunogen	The antiserum was produced against synthesized peptide derived from the human Cytokeratin 13 at the amino acid range 233-282
Immunogen Region	233-282 aa
Specificity	Cytokeratin 13 Polyclonal Antibody detects endogenous levels of Cytokeratin 13 protein.
Immunogen Sequence	



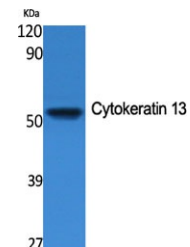
Western blot analysis of lysate from HepG2 cells, using Cytokeratin 13 antibody.



Western blot analysis of HepG2 cells using Cytokeratin 13 Polyclonal Antibody



Immunohistochemistry analysis of Cytokeratin 13 antibody in paraffin-embedded human heart tissue.



Western blot analysis of various cells using Cytokeratin 13 Polyclonal Antibody

This product is suitable for in-vitro studies under the RESEARCH USE ONLY [RUO] licence. This product must not be used as for diagnostic or other medical purposes.
St John's Laboratory Ltd, Knowledge Dock Business Centre, University Way, London, E16 2RD | Tel: 0208 223 3081