

## Anti-CYB5A antibody (61-110 aa) (STJ92622)

STJ92622

### GENERAL INFORMATION

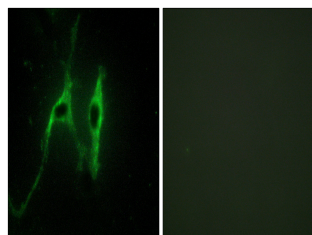
<b>Product Type</b>	Primary antibodies
<b>Short Description</b>	Rabbit polyclonal antibody anti-Cytochrome b5 (61-110 aa) is suitable for use in Western Blot, Immunohistochemistry, Immunofluorescence and ELISA research applications.
<b>Applications</b>	WB/IHC/IF/ELISA
<b>Host/Source</b>	Rabbit
<b>Reactivity</b>	Human/Mouse/Rat

### PRODUCT PROPERTIES

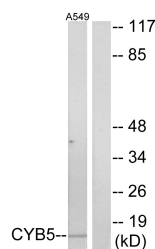
<b>Clonality</b>	Polyclonal
<b>Clone ID</b>	
<b>Concentration</b>	1 mg/mL
<b>Conjugation</b>	Unconjugated
<b>Purification</b>	The antibody was affinity-purified from rabbit antiserum by affinity-chromatography using epitope-specific immunogen.
<b>Dilution Range</b>	WB 1:500-1:2000 IHC 1:100-1:300 IF 1:200-1:1000 ELISA 1:5000
<b>Formulation</b>	Liquid in PBS containing 50% Glycerol, 0.5% BSA and 0.02% Sodium Azide.
<b>Isotype</b>	IgG
<b>Storage Instruction</b>	Store at -20°C for up to 1 year from the date of receipt, and avoid repeat freeze-thaw cycles.

### TARGET INFORMATION

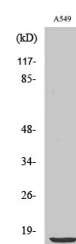
<b>Gene ID</b>	1528
<b>Gene Symbol</b>	CYB5A
<b>Uniprot ID</b>	CYB5_HUMAN
<b>Immunogen</b>	The antiserum was produced against synthesized peptide derived from the human CYB5 at the amino acid range 61-110
<b>Immunogen Region</b>	61-110 aa
<b>Specificity</b>	Cytochrome b5 Polyclonal Antibody detects endogenous levels of Cytochrome b5 protein.
<b>Immunogen Sequence</b>	



Immunofluorescence analysis of NIH/3T3 cells, using CYB5 Antibody. The picture on the right is blocked with the synthesized peptide.



Western blot analysis of lysates from A549 cells, using CYB5 Antibody. The lane on the right is blocked with the synthesized peptide.



Western blot analysis of various cells using Cytochrome b5 Polyclonal Antibody

This product is suitable for in-vitro studies under the RESEARCH USE ONLY [RUO] licence. This product must not be used as for diagnostic or other medical purposes.  
St John's Laboratory Ltd, Knowledge Dock Business Centre, University Way, London, E16 2RD | Tel: 0208 223 3081