

## Anti-CYSLTR1 antibody (131-180 aa) (STJ92609)

STJ92609

### GENERAL INFORMATION

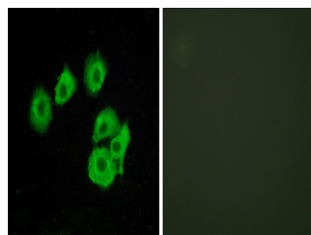
<b>Product Type</b>	Primary antibodies
<b>Short Description</b>	Rabbit polyclonal antibody anti-Cysteiny leukotriene receptor 1 (131-180 aa) is suitable for use in Western Blot, Immunohistochemistry, Immunofluorescence and ELISA research applications.
<b>Applications</b>	WB/IHC/IF/ELISA
<b>Host/Source</b>	Rabbit
<b>Reactivity</b>	Human/Monkey

### PRODUCT PROPERTIES

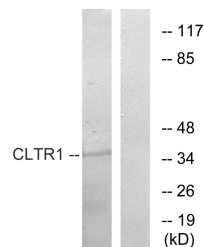
<b>Clonality</b>	Polyclonal
<b>Clone ID</b>	
<b>Concentration</b>	1 mg/mL
<b>Conjugation</b>	Unconjugated
<b>Purification</b>	The antibody was affinity-purified from rabbit antiserum by affinity-chromatography using epitope-specific immunogen.
<b>Dilution Range</b>	WB 1:500-1:2000 IHC 1:100-1:300 IF 1:200-1:1000 ELISA 1:10000
<b>Formulation</b>	Liquid in PBS containing 50% Glycerol, 0.5% BSA and 0.02% Sodium Azide.
<b>Isotype</b>	IgG
<b>Storage</b>	Store at -20°C for up to 1 year from the date of receipt, and avoid repeat freeze-thaw cycles.
<b>Instruction</b>	

### TARGET INFORMATION

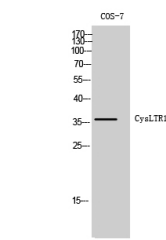
<b>Gene ID</b>	10800
<b>Gene Symbol</b>	CYSLTR1
<b>Uniprot ID</b>	CLTR1_HUMAN
<b>Immunogen</b>	The antiserum was produced against synthesized peptide derived from the human CLTR1 at the amino acid range 131-180
<b>Immunogen Region</b>	131-180 aa
<b>Specificity</b>	CysLTR1 Polyclonal Antibody detects endogenous levels of CysLTR1 protein.
<b>Immunogen Sequence</b>	



Immunofluorescence analysis of HUVEC cells, using CLTR1 Antibody. The picture on the right is blocked with the synthesized peptide.



Western blot analysis of lysates from COS7 cells, using CLTR1 Antibody. The lane on the right is blocked with the synthesized peptide.



Western blot analysis of COS-7 cells using CysLTR1 Polyclonal Antibody