

Anti-CYP4V2 antibody (Internal) (STJ92601)

STJ92601

GENERAL INFORMATION

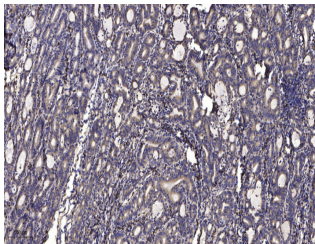
Product Type	Primary antibodies
Short Description	Rabbit polyclonal antibody anti-Cytochrome P450 4V2 (Internal) is suitable for use in Western Blot, Immunohistochemistry, Immunofluorescence and ELISA research applications.
Applications	WB/IHC/IF/ELISA
Host/Source	Rabbit
Reactivity	Human/Rat/Mouse

PRODUCT PROPERTIES

Clonality	Polyclonal
Clone ID	
Concentration	1 mg/mL
Conjugation	Unconjugated
Purification	The antibody was affinity-purified from rabbit antiserum by affinity-chromatography using epitope-specific immunogen.
Dilution Range	WB 1:500-1:2000 IHC 1:100-1:300 ELISA 1:20000 IF 1:50-200
Formulation	Liquid in PBS containing 50% Glycerol, 0.5% BSA and 0.02% Sodium Azide.
Isotype	IgG
Storage	Store at -20°C for up to 1 year from the date of receipt, and avoid repeat freeze-thaw cycles.
Instruction	

TARGET INFORMATION

Gene ID	285440
Gene Symbol	CYP4V2
Uniprot ID	CP4V2_HUMAN
Immunogen	Synthesized peptide derived from the Internal region of human CYP4V2.
Immunogen	Internal
Region	
Specificity	CYP4V2 Polyclonal Antibody detects endogenous levels of CYP4V2 protein.
Immunogen	
Sequence	



Immunohistochemical analysis of paraffin-embedded human Gastric adenocarcinoma. 1. Antibody was diluted at 1:200 (4°C overnight). 2. Tris-EDTA, pH9.0 was used for antigen retrieval. 3. Secondary antibody was diluted at 1:200 (room temperature, 45min).

This product is suitable for in-vitro studies under the RESEARCH USE ONLY [RUO] licence. This product must not be used as for diagnostic or other medical purposes.
St John's Laboratory Ltd, Knowledge Dock Business Centre, University Way, London, E16 2RD | Tel: 0208 223 3081