

## Anti-CYP4B1 antibody (141-190 aa) (STJ92598)

STJ92598

### GENERAL INFORMATION

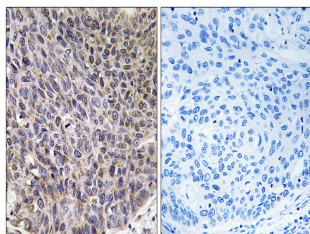
<b>Product Type</b>	Primary antibodies
<b>Short Description</b>	Rabbit polyclonal antibody anti-Cytochrome P450 4B1 (141-190 aa) is suitable for use in Western Blot, Immunohistochemistry, Immunofluorescence and ELISA research applications.
<b>Applications</b>	WB/IHC/IF/ELISA
<b>Host/Source</b>	Rabbit
<b>Reactivity</b>	Human/Rat/Mouse

### PRODUCT PROPERTIES

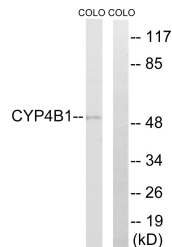
<b>Clonality</b>	Polyclonal
<b>Clone ID</b>	
<b>Concentration</b>	1 mg/mL
<b>Conjugation</b>	Unconjugated
<b>Purification</b>	The antibody was affinity-purified from rabbit antiserum by affinity-chromatography using epitope-specific immunogen.
<b>Dilution Range</b>	WB 1:500-1:2000 IHC 1:100-1:300 ELISA 1:40000 IF 1:50-200
<b>Formulation</b>	Liquid in PBS containing 50% Glycerol, 0.5% BSA and 0.02% Sodium Azide.
<b>Isotype</b>	IgG
<b>Storage Instruction</b>	Store at -20°C for up to 1 year from the date of receipt, and avoid repeat freeze-thaw cycles.

### TARGET INFORMATION

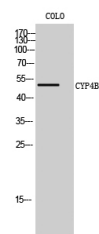
<b>Gene ID</b>	1580
<b>Gene Symbol</b>	CYP4B1
<b>Uniprot ID</b>	CP4B1_HUMAN
<b>Immunogen</b>	The antiserum was produced against synthesized peptide derived from the human Cytochrome P450 4B1 at the amino acid range 141-190
<b>Immunogen Region</b>	141-190 aa
<b>Specificity</b>	CYP4B1 Polyclonal Antibody detects endogenous levels of CYP4B1 protein.
<b>Immunogen Sequence</b>	



Immunohistochemistry analysis of paraffin-embedded human lung carcinoma tissue, using Cytochrome P450 4B1 Antibody. The picture on the right is blocked with the synthesized peptide.



Western blot analysis of lysates from COLO cells, using Cytochrome P450 4B1 Antibody. The lane on the right is blocked with the synthesized peptide.



Western blot analysis of COLO cells using CYP4B1 Polyclonal Antibody