

Anti-CYP2C19 antibody (241-290 aa) (STJ92575)

STJ92575

GENERAL INFORMATION

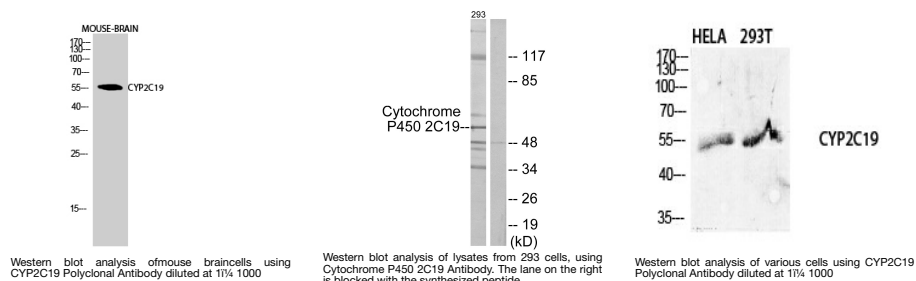
Product Type	Primary antibodies
Short Description	Rabbit polyclonal antibody anti-Cytochrome P450 2C19-limonene 6-monooxygenase-limonene 6-monooxygenase-limonene 7-monooxygenase (241-290 aa) is suitable for use in Western Blot, Immunohistochemistry, Immunofluorescence and ELISA research applications
Applications	WB/IHC/IF/ELISA
Host/Source	Rabbit
Reactivity	Human/Rat/Mouse

PRODUCT PROPERTIES

Clonality	Polyclonal
Clone ID	
Concentration	1 mg/mL
Conjugation	Unconjugated
Purification	The antibody was affinity-purified from rabbit antiserum by affinity-chromatography using epitope-specific immunogen.
Dilution Range	WB 1:500-1:2000 IHC 1:100-1:300 IF 1:200-1:1000 ELISA 1:5000
Formulation	Liquid in PBS containing 50% Glycerol, 0.5% BSA and 0.02% Sodium Azide.
Isotype	IgG
Storage Instruction	Store at -20°C for up to 1 year from the date of receipt, and avoid repeat freeze-thaw cycles.

TARGET INFORMATION

Gene ID	1557
Gene Symbol	CYP2C19
Uniprot ID	CP2CJ_HUMAN
Immunogen	The antiserum was produced against synthesized peptide derived from the human Cytochrome P450 2C19 at the amino acid range 241-290
Immunogen Region	241-290 aa
Specificity	CYP2C19 Polyclonal Antibody detects endogenous levels of CYP2C19 protein.
Immunogen Sequence	



This product is suitable for in-vitro studies under the RESEARCH USE ONLY [RUO] licence. This product must not be used as for diagnostic or other medical purposes.
St John's Laboratory Ltd, Knowledge Dock Business Centre, University Way, London, E16 2RD | Tel: 0208 223 3081