

Anti-CYP27A1 antibody (101-150 aa) (STJ92567)

STJ92567

GENERAL INFORMATION

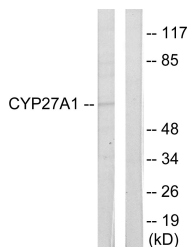
Product Type	Primary antibodies
Short Description	Rabbit polyclonal antibody anti-Sterol 26-hydroxylase, mitochondrial 25-hydroxylase (101-150 aa) is suitable for use in Western Blot, Immunohistochemistry, Immunofluorescence and ELISA research applications.
Applications	WB/IHC/IF/ELISA
Host/Source	Rabbit
Reactivity	Human/Rat/Mouse

PRODUCT PROPERTIES

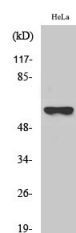
Clonality	Polyclonal
Clone ID	
Concentration	1 mg/mL
Conjugation	Unconjugated
Purification	The antibody was affinity-purified from rabbit antiserum by affinity-chromatography using epitope-specific immunogen.
Dilution	WB 1:500-1:2000
Range	IHC 1:100-1:300 IF 1:200-1:1000 ELISA 1:10000
Formulation	Liquid in PBS containing 50% Glycerol, 0.5% BSA and 0.02% Sodium Azide.
Isotype	IgG
Storage	Store at -20°C for up to 1 year from the date of receipt, and avoid repeat freeze-thaw cycles.
Instruction	

TARGET INFORMATION

Gene ID	1593
Gene Symbol	CYP27A1
Uniprot ID	CP27A_HUMAN
Immunogen	The antiserum was produced against synthesized peptide derived from the human Cytochrome P450 27A1 at the amino acid range 101-150
Immunogen Region	101-150 aa
Specificity	CYP27A1 Polyclonal Antibody detects endogenous levels of CYP27A1 protein.
Immunogen Sequence	



Western blot analysis of lysates from HeLa cells, using Cytochrome P450 27A1 Antibody. The lane on the right is blocked with the synthesized peptide.



Western blot analysis of various cells using CYP27A1 Polyclonal Antibody diluted at 1:1000