

## Anti-CYP1A1/2 antibody (71-120 aa) (STJ92556)

STJ92556

### GENERAL INFORMATION

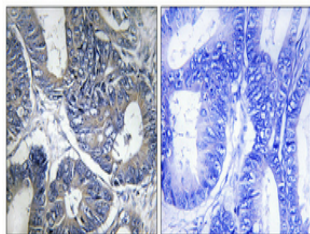
<b>Product Type</b>	Primary antibodies
<b>Short Description</b>	Rabbit polyclonal antibody anti-Cytochrome P450 1A1 and Cytochrome P450 1A2 (71-120 aa) is suitable for use in Western Blot, Immunohistochemistry, Immunofluorescence and ELISA research applications.
<b>Applications</b>	WB/IHC/IF/ELISA
<b>Host/Source</b>	Rabbit
<b>Reactivity</b>	Human/Mouse/Rat/Monkey

### PRODUCT PROPERTIES

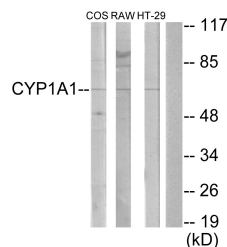
<b>Clonality</b>	Polyclonal
<b>Clone ID</b>	
<b>Concentration</b>	1 mg/mL
<b>Conjugation</b>	Unconjugated
<b>Purification</b>	The antibody was affinity-purified from rabbit antiserum by affinity-chromatography using epitope-specific immunogen.
<b>Dilution</b>	WB 1:500-1:2000
<b>Range</b>	IHC 1:100-1:300 IF 1:200-1:1000 ELISA 1:20000
<b>Formulation</b>	Liquid in PBS containing 50% Glycerol, 0.5% BSA and 0.02% Sodium Azide.
<b>Isotype</b>	IgG
<b>Storage</b>	Store at -20°C for up to 1 year from the date of receipt, and avoid repeat freeze-thaw cycles.
<b>Instruction</b>	

### TARGET INFORMATION

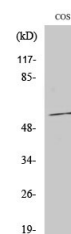
<b>Gene ID</b>	1544 1543
<b>Gene Symbol</b>	CYP1A2 CYP1A1
<b>Uniprot ID</b>	CP1A2_HUMAN CP1A1_HUMAN
<b>Immunogen</b>	The antiserum was produced against synthesized peptide derived from the human Cytochrome P450 1A1/2 at the amino acid range 71-120
<b>Immunogen Region</b>	71-120 aa
<b>Specificity</b>	CYP1A1/2 Polyclonal Antibody detects endogenous levels of CYP1A1/2 protein.
<b>Immunogen Sequence</b>	



Immunohistochemical analysis of paraffin-embedded Human colon cancer. Antibody was diluted at 1:100 (4A°C overnight). High-pressure and temperature Tris-EDTA, pH8.0 was used for antigen retrieval. Negative control (right) obtained from antibody was pre-absorbed by immunogen peptide.



Western blot analysis of lysates from COS7, RAW264.7, and HT-29 cells, using Cytochrome P450 1A1/2 Antibody. The lane on the right is blocked with the synthesized peptide.



Western blot analysis of various cells using CYP1A1/2 Polyclonal Antibody

This product is suitable for in-vitro studies under the RESEARCH USE ONLY [RUO] licence. This product must not be used as for diagnostic or other medical purposes.  
St John's Laboratory Ltd, Knowledge Dock Business Centre, University Way, London, E16 2RD | Tel: 0208 223 3081