

## Anti-CCNB1 antibody (121-170 aa) (STJ92535)

STJ92535

### GENERAL INFORMATION

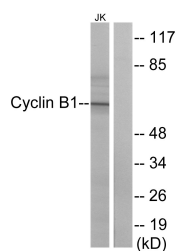
<b>Product Type</b>	Primary antibodies
<b>Short Description</b>	Rabbit polyclonal antibody anti-G2/mitotic-specific cyclin-B1 (121-170 aa) is suitable for use in Western Blot, Immunohistochemistry and Immunofluorescence research applications.
<b>Applications</b>	WB/IHC/IF
<b>Host/Source</b>	Rabbit
<b>Reactivity</b>	Human/Mouse/Rat

### PRODUCT PROPERTIES

<b>Clonality</b>	Polyclonal
<b>Clone ID</b>	
<b>Concentration</b>	1 mg/mL
<b>Conjugation</b>	Unconjugated
<b>Purification</b>	The antibody was affinity-purified from rabbit antiserum by affinity-chromatography using epitope-specific immunogen.
<b>Dilution Range</b>	WB 1:500-1:2000 IHC 1:50-1:200 IF 1:50-200
<b>Formulation</b>	Liquid in PBS containing 50% Glycerol, 0.5% BSA and 0.02% Sodium Azide.
<b>Isotype</b>	IgG
<b>Storage Instruction</b>	Store at -20°C for up to 1 year from the date of receipt, and avoid repeat freeze-thaw cycles.

### TARGET INFORMATION

<b>Gene ID</b>	891
<b>Gene Symbol</b>	CCNB1
<b>Uniprot ID</b>	CCNB1_HUMAN
<b>Immunogen</b>	The antiserum was produced against synthesized peptide derived from the human Cyclin B1 at the amino acid range 121-170
<b>Immunogen Region</b>	121-170 aa
<b>Specificity</b>	Cyclin B1 Polyclonal Antibody detects endogenous levels of Cyclin B1 protein.
<b>Immunogen Sequence</b>	



Western blot analysis of lysates from Jurkat cells, treated with UV 15, using Cyclin B1 Antibody. The lane on the right is blocked with the synthesized peptide.

This product is suitable for in-vitro studies under the RESEARCH USE ONLY [RUO] licence. This product must not be used as for diagnostic or other medical purposes.  
St John's Laboratory Ltd, Knowledge Dock Business Centre, University Way, London, E16 2RD | Tel: 0208 223 3081