

Anti-CYB5R3 antibody (137-186 aa) (STJ92531)

STJ92531

GENERAL INFORMATION

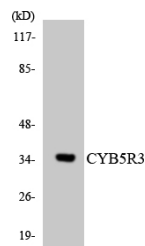
Product Type	Primary antibodies
Short Description	Rabbit polyclonal antibody anti-NADH-cytochrome b5 reductase 3 (137-186 aa) is suitable for use in Western Blot, Immunohistochemistry, Immunofluorescence and ELISA research applications.
Applications	WB/IHC/IF/ELISA
Host/Source	Rabbit
Reactivity	Human/Rat/Mouse

PRODUCT PROPERTIES

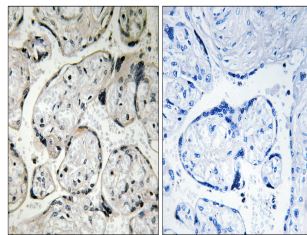
Clonality	Polyclonal
Clone ID	
Concentration	1 mg/mL
Conjugation	Unconjugated
Purification	The antibody was affinity-purified from rabbit antiserum by affinity-chromatography using epitope-specific immunogen.
Dilution Range	WB 1:500-1:2000 IHC 1:100-1:300 ELISA 1:40000 IF 1:50-200
Formulation	Liquid in PBS containing 50% Glycerol, 0.5% BSA and 0.02% Sodium Azide.
Isotype	IgG
Storage Instruction	Store at -20°C for up to 1 year from the date of receipt, and avoid repeat freeze-thaw cycles.

TARGET INFORMATION

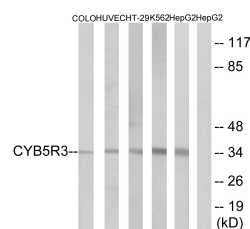
Gene ID	1727
Gene Symbol	CYB5R3
Uniprot ID	NB5R3_HUMAN
Immunogen	The antiserum was produced against synthesized peptide derived from the human CYB5R3 at the amino acid range 137-186
Immunogen Region	137-186 aa
Specificity	CYB5R3 Polyclonal Antibody detects endogenous levels of CYB5R3 protein.
Immunogen Sequence	



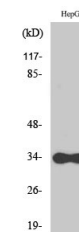
Western blot analysis of the lysates from K562 cells using CYB5R3 antibody.



Immunohistochemistry analysis of paraffin-embedded human placenta tissue, using CYB5R3 Antibody. The picture on the right is blocked with the synthesized peptide.



Western blot analysis of lysates from HepG2, COLO, HUVEC, HT-29, and K562 cells, using CYB5R3 Antibody. The lane on the right is blocked with the synthesized peptide.



Western blot analysis of various cells using CYB5R3 Polyclonal Antibody