

Anti-CUL3 antibody (1-50 aa) (STJ92524)

STJ92524

GENERAL INFORMATION

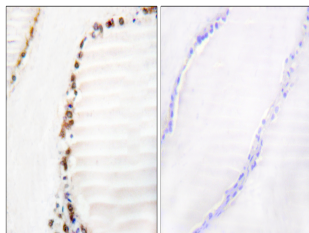
Product Type	Primary antibodies
Short Description	Rabbit polyclonal antibody anti-Cullin-3 (1-50 aa) is suitable for use in Western Blot, Immunohistochemistry, Immunofluorescence and ELISA research applications.
Applications	WB/IHC/IF/ELISA
Host/Source	Rabbit
Reactivity	Human/Mouse

PRODUCT PROPERTIES

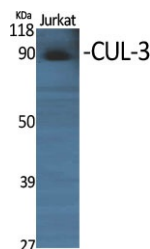
Clonality	Polyclonal
Clone ID	
Concentration	1 mg/mL
Conjugation	Unconjugated
Purification	The antibody was affinity-purified from rabbit antiserum by affinity-chromatography using epitope-specific immunogen.
Dilution Range	WB 1:500-2000 IHC 1:100-1:300 ELISA 1:5000 IF 1:50-200
Formulation	Liquid in PBS containing 50% Glycerol, 0.5% BSA and 0.02% Sodium Azide.
Isotype	IgG
Storage Instruction	Store at -20°C for up to 1 year from the date of receipt, and avoid repeat freeze-thaw cycles.

TARGET INFORMATION

Gene ID	8452
Gene Symbol	CUL3
Uniprot ID	CUL3_HUMAN
Immunogen	The antiserum was produced against synthesized peptide derived from the human Cullin 3 at the amino acid range 1-50
Immunogen Region	1-50 aa
Specificity	CUL-3 Polyclonal Antibody detects endogenous levels of CUL-3 protein.
Immunogen Sequence	



Immunohistochemistry analysis of paraffin-embedded human thyroid gland tissue, using Cullin 3 Antibody. The picture on the right is blocked with the synthesized peptide.



Western blot analysis of various cells using CUL-3 Polyclonal Antibody diluted at 1:1000

This product is suitable for in-vitro studies under the RESEARCH USE ONLY [RUO] licence. This product must not be used as for diagnostic or other medical purposes.
St John's Laboratory Ltd, Knowledge Dock Business Centre, University Way, London, E16 2RD | Tel: 0208 223 3081