

Anti-CSTF2 antibody (11-60 aa) (STJ92510)

STJ92510

GENERAL INFORMATION

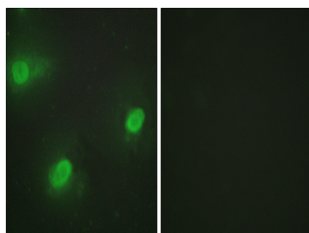
Product Type	Primary antibodies
Short Description	Rabbit polyclonal antibody anti-Cleavage stimulation factor subunit 2 (11-60 aa) is suitable for use in Western Blot, Immunohistochemistry, Immunofluorescence and ELISA research applications.
Applications	WB/IHC/IF/ELISA
Host/Source	Rabbit
Reactivity	Human/Mouse

PRODUCT PROPERTIES

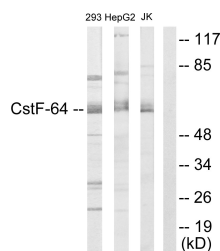
Clonality	Polyclonal
Clone ID	
Concentration	1 mg/mL
Conjugation	Unconjugated
Purification	The antibody was affinity-purified from rabbit antiserum by affinity-chromatography using epitope-specific immunogen.
Dilution Range	WB 1:500-1:2000 IHC 1:100-1:300 IF 1:200-1:1000 ELISA 1:5000
Formulation	Liquid in PBS containing 50% Glycerol, 0.5% BSA and 0.02% Sodium Azide.
Isotype	IgG
Storage Instruction	Store at -20°C for up to 1 year from the date of receipt, and avoid repeat freeze-thaw cycles.

TARGET INFORMATION

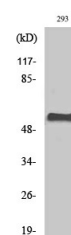
Gene ID	1478
Gene Symbol	CSTF2
Uniprot ID	CSTF2_HUMAN
Immunogen	The antiserum was produced against synthesized peptide derived from the human CSTF2 at the amino acid range 11-60
Immunogen Region	11-60 aa
Specificity	CstF-64 Polyclonal Antibody detects endogenous levels of CstF-64 protein.
Immunogen Sequence	



Immunofluorescence analysis of HeLa cells, using CSTF2 Antibody. The picture on the right is blocked with the synthesized peptide.



Western blot analysis of lysates from 293, K562, and Jurkat cells, using CSTF2 Antibody. The lane on the right is blocked with the synthesized peptide.



Western blot analysis of various cells using CstF-64 Polyclonal Antibody diluted at 1:1000 cells nucleus extracted by Minute TM Cytoplasmic and Nuclear Fractionation kit (SC-003, Inventibiotech, MN, USA).