

Anti-SRC antibody (360-440 aa) (STJ92501)

STJ92501

GENERAL INFORMATION

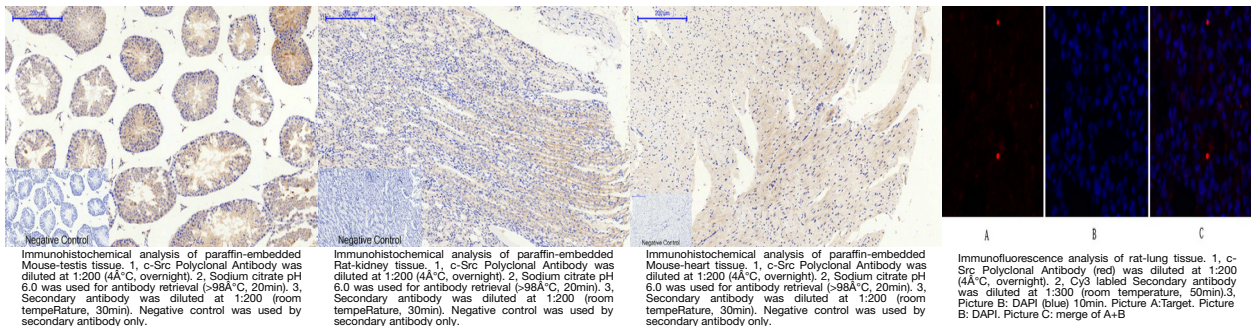
Product Type	Primary antibodies
Short Description	Rabbit polyclonal antibody anti-Proto-oncogene tyrosine-protein kinase Src (360-440 aa) is suitable for use in Western Blot, Immunoprecipitation, Immunohistochemistry, Immunofluorescence and ELISA research applications.
Applications	WB/IP/IHC/IF/ELISA
Host/Source	Rabbit
Reactivity	Human/Mouse/Rat

PRODUCT PROPERTIES

Clonality	Polyclonal
Clone ID	
Concentration	1 mg/mL
Conjugation	Unconjugated
Purification	The antibody was affinity-purified from rabbit antiserum by affinity-chromatography using epitope-specific immunogen.
Dilution	WB 1:500-1:2000
Range	IHC 1:100-1:300 IF 1:200-1:1000 ELISA 1:40000
Formulation	Liquid in PBS containing 50% Glycerol, 0.5% BSA and 0.02% Sodium Azide.
Isotype	IgG
Storage Instruction	Store at -20°C for up to 1 year from the date of receipt, and avoid repeat freeze-thaw cycles.

TARGET INFORMATION

Gene ID	6714
Gene Symbol	SRC
Uniprot ID	SRC_HUMAN
Immunogen	Synthesized peptide derived from c-Src at the amino acid range 360-440
Immunogen	360-440 aa
Region	
Specificity	c-Src Polyclonal Antibody detects endogenous levels of c-Src protein.
Immunogen Sequence	



This product is suitable for in-vitro studies under the RESEARCH USE ONLY [RUO] licence. This product must not be used as for diagnostic or other medical purposes.
St John's Laboratory Ltd, Knowledge Dock Business Centre, University Way, London, E16 2RD | Tel: 0208 223 3081