

Anti-MED23 antibody (1-50 aa) (STJ92485)

STJ92485

GENERAL INFORMATION

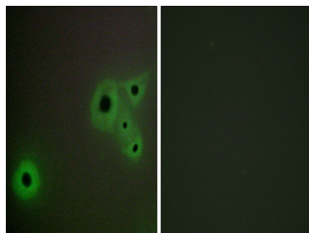
Product Type	Primary antibodies
Short Description	Rabbit polyclonal antibody anti-Mediator of RNA polymerase II transcription subunit 23 (1-50 aa) is suitable for use in Western Blot, Immunohistochemistry, Immunofluorescence and ELISA research applications.
Applications	WB/IHC/IF/ELISA
Host/Source	Rabbit
Reactivity	Human/Mouse/Rat

PRODUCT PROPERTIES

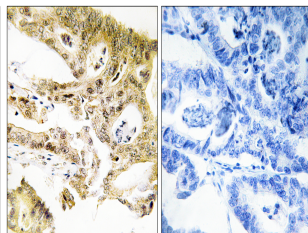
Clonality	Polyclonal
Clone ID	
Concentration	1 mg/mL
Conjugation	Unconjugated
Purification	The antibody was affinity-purified from rabbit antiserum by affinity-chromatography using epitope-specific immunogen.
Dilution	WB 1:500-1:2000
Range	IHC 1:100-1:300 IF 1:200-1:1000 ELISA 1:5000
Formulation	Liquid in PBS containing 50% Glycerol, 0.5% BSA and 0.02% Sodium Azide.
Isotype	IgG
Storage	Store at -20°C for up to 1 year from the date of receipt, and avoid repeat freeze-thaw cycles.
Instruction	

TARGET INFORMATION

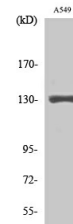
Gene ID	9439
Gene Symbol	MED23
Uniprot ID	MED23_HUMAN
Immunogen	The antiserum was produced against synthesized peptide derived from the human MED23 at the amino acid range 1-50
Immunogen Region	1-50 aa
Specificity	CRSP130 Polyclonal Antibody detects endogenous levels of CRSP130 protein.
Immunogen Sequence	



Immunofluorescence analysis of A549 cells, using MED23 Antibody. The picture on the right is blocked with the synthesized peptide.



Immunohistochemistry analysis of paraffin-embedded human colon carcinoma tissue, using MED23 Antibody. The picture on the right is blocked with the synthesized peptide.



Western blot analysis of various cells using CRSP130 Polyclonal Antibody cells nucleus extracted by Minute TM Cytoplasmic and Nuclear Fractionation kit (SC-003, InventiBiotec, MN, USA).