

Anti-REL antibody (470-519 aa) (STJ92470)

STJ92470

GENERAL INFORMATION

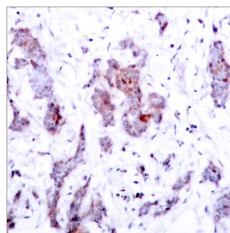
Product Type	Primary antibodies
Short Description	Rabbit polyclonal antibody anti-Proto-oncogene c-Rel (470-519 aa) is suitable for use in Western Blot, Immunohistochemistry, Immunofluorescence and ELISA research applications.
Applications	WB/IHC/IF/ELISA
Host/Source	Rabbit
Reactivity	Human/Rat/Mouse

PRODUCT PROPERTIES

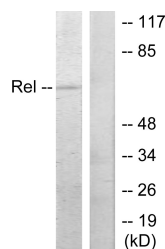
Clonality	Polyclonal
Clone ID	
Concentration	1 mg/mL
Conjugation	Unconjugated
Purification	The antibody was affinity-purified from rabbit antiserum by affinity-chromatography using epitope-specific immunogen.
Dilution Range	WB 1:500-1:2000 IHC 1:100-1:300 ELISA 1:20000 IF 1:50-200
Formulation	Liquid in PBS containing 50% Glycerol, 0.5% BSA and 0.02% Sodium Azide.
Isotype	IgG
Storage Instruction	Store at -20°C for up to 1 year from the date of receipt, and avoid repeat freeze-thaw cycles.

TARGET INFORMATION

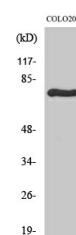
Gene ID	5966
Gene Symbol	REL
Uniprot ID	REL_HUMAN
Immunogen	The antiserum was produced against synthesized peptide derived from the human Rel at the amino acid range 470-519
Immunogen Region	470-519 aa
Specificity	c-Rel Polyclonal Antibody detects endogenous levels of c-Rel protein.
Immunogen Sequence	



Immunohistochemistry analysis of paraffin-embedded human breast carcinoma tissue, using Rel Antibody. The picture on the right is blocked with the synthesized peptide.



Western blot analysis of lysates from MDA-MB-435 cells, using Rel Antibody. The lane on the right is blocked with the synthesized peptide.



Western blot analysis of various cells using c-Rel Polyclonal Antibody cells nucleus extracted by Minute TM Cytoplasmic and Nuclear Fractionation kit (SC-003, Inventorlab, MN, USA).