

Anti-CPT1B antibody (401-450 aa) (STJ92456)

STJ92456

GENERAL INFORMATION

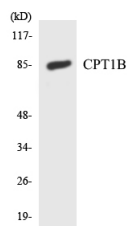
Product Type	Primary antibodies
Short Description	Rabbit polyclonal antibody anti-Carnitine O-palmitoyltransferase 1, muscle isoform (401-450 aa) is suitable for use in Western Blot, Immunohistochemistry, Immunofluorescence and ELISA research applications.
Applications	WB/IHC/IF/ELISA
Host/Source	Rabbit
Reactivity	Human/Rat/Mouse

PRODUCT PROPERTIES

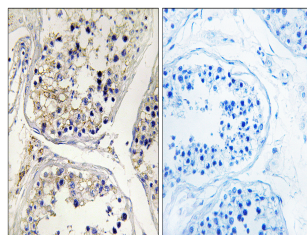
Clonality	Polyclonal
Clone ID	
Concentration	1 mg/mL
Conjugation	Unconjugated
Purification	The antibody was affinity-purified from rabbit antiserum by affinity-chromatography using epitope-specific immunogen.
Dilution	WB 1:500-1:2000
Range	IHC 1:100-1:300 ELISA 1:40000 IF 1:50-200
Formulation	Liquid in PBS containing 50% Glycerol, 0.5% BSA and 0.02% Sodium Azide.
Isotype	IgG
Storage Instruction	Store at -20°C for up to 1 year from the date of receipt, and avoid repeat freeze-thaw cycles.

TARGET INFORMATION

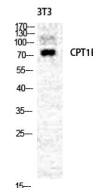
Gene ID	1375
Gene Symbol	CPT1B
Uniprot ID	CPT1B_HUMAN
Immunogen	The antiserum was produced against synthesized peptide derived from the human CPT1B at the amino acid range 401-450
Immunogen Region	401-450 aa
Specificity	CPTI-M Polyclonal Antibody detects endogenous levels of CPTI-M protein.
Immunogen Sequence	



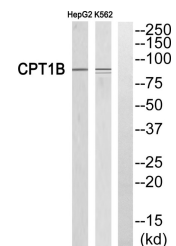
Western blot analysis of the lysates from HepG2 cells using CPT1B antibody.



Immunohistochemistry analysis of paraffin-embedded human testis, using CPT1B Antibody. The lane on the right is blocked with the CPT1B peptide.



Western blot analysis of NIH-3T3 cells using CPT1B Polyclonal Antibody diluted at 1/4 2000



Western blot analysis of CPT1B Antibody. The lane on the right is blocked with the CPT1B peptide.

This product is suitable for in-vitro studies under the RESEARCH USE ONLY [RUO] licence. This product must not be used as for diagnostic or other medical purposes.
St John's Laboratory Ltd, Knowledge Dock Business Centre, University Way, London, E16 2RD | Tel: 0208 223 3081