

Anti-PLA2G4E antibody (401-450 aa) (STJ92452)

STJ92452

GENERAL INFORMATION

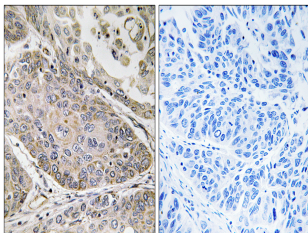
Product Type	Primary antibodies
Short Description	Rabbit polyclonal antibody anti-Cytosolic phospholipase A2 epsilon (401-450 aa) is suitable for use in Immunohistochemistry, Immunofluorescence and ELISA research applications.
Applications	IHC/IF/ELISA
Host/Source	Rabbit
Reactivity	Human/Rat/Mouse

PRODUCT PROPERTIES

Clonality	Polyclonal
Clone ID	
Concentration	1 mg/mL
Conjugation	Unconjugated
Purification	The antibody was affinity-purified from rabbit antiserum by affinity-chromatography using epitope-specific immunogen.
Dilution Range	IHC 1:100-1:300 ELISA 1:40000 IF 1:50-200
Formulation	Liquid in PBS containing 50% Glycerol, 0.5% BSA and 0.02% Sodium Azide.
Isotype	IgG
Storage Instruction	Store at -20°C for up to 1 year from the date of receipt, and avoid repeat freeze-thaw cycles.

TARGET INFORMATION

Gene ID	123745
Gene Symbol	PLA2G4E
Uniprot ID	PA24E_HUMAN
Immunogen	The antiserum was produced against synthesized peptide derived from the human PLA2G4E at the amino acid range 401-450
Immunogen Region	401-450 aa
Specificity	cPLA2-Epsilon Polyclonal Antibody detects endogenous levels of cPLA2-Epsilon protein.
Immunogen Sequence	



Immunohistochemistry analysis of paraffin-embedded human lung carcinoma, using PLA2G4E Antibody. The picture on the right is blocked with the synthesized peptide.