

Anti-COX17 antibody (1-50 aa) (STJ92436)

STJ92436

GENERAL INFORMATION

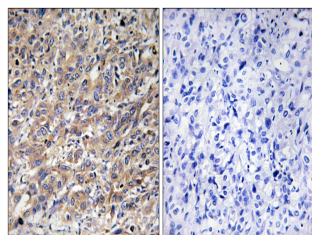
Product Type	Primary antibodies
Short Description	Rabbit polyclonal antibody anti-Cytochrome c oxidase copper chaperone (1-50 aa) is suitable for use in Western Blot, Immunohistochemistry, Immunofluorescence and ELISA research applications.
Applications	WB/IHC/IF/ELISA
Host/Source	Rabbit
Reactivity	Human/Mouse/Rat

PRODUCT PROPERTIES

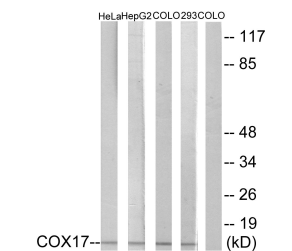
Clonality	Polyclonal
Clone ID	
Concentration	1 mg/mL
Conjugation	Unconjugated
Purification	The antibody was affinity-purified from rabbit antiserum by affinity-chromatography using epitope-specific immunogen.
Dilution	WB 1:500-1:2000
Range	IHC 1:100-1:300 IF 1:200-1:1000 ELISA 1:5000
Formulation	Liquid in PBS containing 50% Glycerol, 0.5% BSA and 0.02% Sodium Azide.
Isotype	IgG
Storage Instruction	Store at -20°C for up to 1 year from the date of receipt, and avoid repeat freeze-thaw cycles.

TARGET INFORMATION

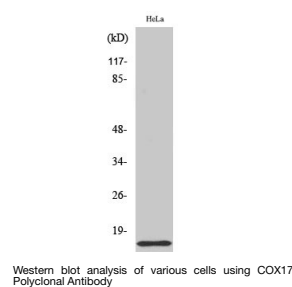
Gene ID	10063
Gene Symbol	COX17
Uniprot ID	COX17_HUMAN
Immunogen	The antiserum was produced against synthesized peptide derived from the human COX17 at the amino acid range 1-50
Immunogen Region	1-50 aa
Specificity	COX17 Polyclonal Antibody detects endogenous levels of COX17 protein.
Immunogen Sequence	



Immunohistochemistry analysis of paraffin-embedded human liver carcinoma tissue, using COX17 Antibody. The picture on the right is blocked with the synthesized peptide.



Western blot analysis of lysates from HeLa, HepG2, COLO, and 293 cells, using COX17 Antibody. The lane on the right is blocked with the synthesized peptide.



Western blot analysis of various cells using COX17 Polyclonal Antibody

This product is suitable for in-vitro studies under the RESEARCH USE ONLY [RUO] licence. This product must not be used as for diagnostic or other medical purposes.
St John's Laboratory Ltd, Knowledge Dock Business Centre, University Way, London, E16 2RD | Tel: 0208 223 3081