

Anti-GJA1 antibody (333-382 aa) (STJ92411)

STJ92411

GENERAL INFORMATION

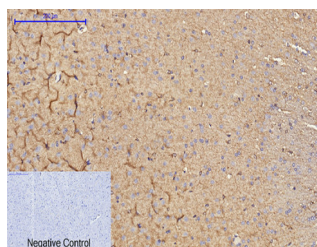
Product Type	Primary antibodies
Short Description	Rabbit polyclonal antibody anti-Gap junction alpha-1 protein (333-382 aa) is suitable for use in Western Blot, Immunohistochemistry, Immunofluorescence and ELISA research applications.
Applications	WB/IHC/IF/ELISA
Host/Source	Rabbit
Reactivity	Human/Mouse/Rat

PRODUCT PROPERTIES

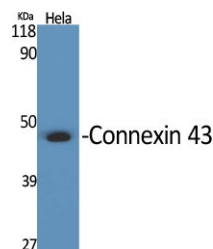
Clonality	Polyclonal
Clone ID	
Concentration	1 mg/mL
Conjugation	Unconjugated
Purification	The antibody was affinity-purified from rabbit antiserum by affinity-chromatography using epitope-specific immunogen.
Dilution Range	WB 1:500-1:2000 IHC-P 1:100-300 ELISA 1:20000 IF 1:100-300
Formulation	Liquid in PBS containing 50% Glycerol, 0.5% BSA and 0.02% Sodium Azide.
Isotype	IgG
Storage Instruction	Store at -20°C for up to 1 year from the date of receipt, and avoid repeat freeze-thaw cycles.

TARGET INFORMATION

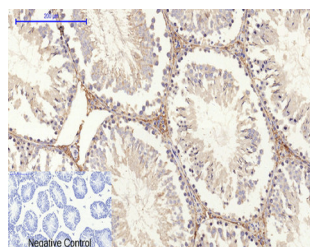
Gene ID	2697
Gene Symbol	GJA1
Uniprot ID	CXA1_HUMAN
Immunogen	The antiserum was produced against synthesized peptide derived from the human Connexin 43 at the amino acid range 333-382
Immunogen	333-382 aa
Region	
Specificity	Connexin 43 Polyclonal Antibody detects endogenous levels of Connexin 43 protein.
Immunogen Sequence	



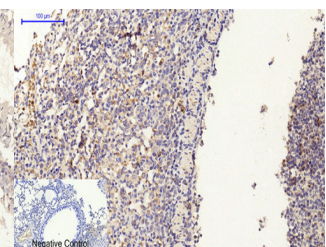
Immunohistochemical analysis of paraffin-embedded Mouse-brain tissue. 1, Connexin 43 Polyclonal Antibody was diluted at 1:200 (4A°C, overnight). 2, Sodium citrate pH 6.0 was used for antibody retrieval (>98A°C, 20min). 3, Secondary antibody was diluted at 1:200 (room temperature, 30min). Negative control was used by secondary antibody only.



Western blot analysis of various cells using Connexin 43 Polyclonal Antibody diluted at 1/4 2000



Immunohistochemical analysis of paraffin-embedded Mouse-testis tissue. 1, Connexin 43 Polyclonal Antibody was diluted at 1:200 (4A°C, overnight). 2, Sodium citrate pH 6.0 was used for antibody retrieval (>98A°C, 20min). 3, Secondary antibody was diluted at 1:200 (room temperature, 30min). Negative control was used by secondary antibody only.



Immunohistochemical analysis of paraffin-embedded Mouse-lung tissue. 1, Connexin 43 Polyclonal Antibody was diluted at 1:200 (4A°C, overnight). 2, Sodium citrate pH 6.0 was used for antibody retrieval (>98A°C, 20min). 3, Secondary antibody was diluted at 1:200 (room temperature, 30min). Negative control was used by secondary antibody only.

This product is suitable for in-vitro studies under the RESEARCH USE ONLY [RUO] licence. This product must not be used as for diagnostic or other medical purposes.
St John's Laboratory Ltd, Knowledge Dock Business Centre, University Way, London, E16 2RD | Tel: 0208 223 3081