

Anti-COL6A2 antibody (691-740 aa) (STJ92400)

STJ92400

GENERAL INFORMATION

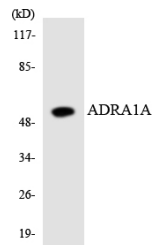
Product Type	Primary antibodies
Short Description	Rabbit polyclonal antibody anti-Collagen alpha-2VI chain (691-740 aa) is suitable for use in Western Blot, Immunohistochemistry, Immunofluorescence and ELISA research applications.
Applications	WB/IHC/IF/ELISA
Host/Source	Rabbit
Reactivity	Human/Mouse/Monkey

PRODUCT PROPERTIES

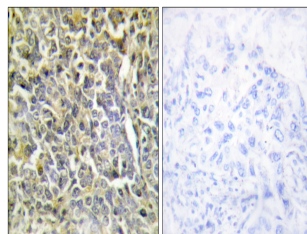
Clonality	Polyclonal
Clone ID	
Concentration	1 mg/mL
Conjugation	Unconjugated
Purification	The antibody was affinity-purified from rabbit antiserum by affinity-chromatography using epitope-specific immunogen.
Dilution Range	WB 1:500-1:2000 IHC 1:100-1:300 IF 1:200-1:1000 ELISA 1:10000
Formulation	Liquid in PBS containing 50% Glycerol, 0.5% BSA and 0.02% Sodium Azide.
Isotype	IgG
Storage Instruction	Store at -20°C for up to 1 year from the date of receipt, and avoid repeat freeze-thaw cycles.

TARGET INFORMATION

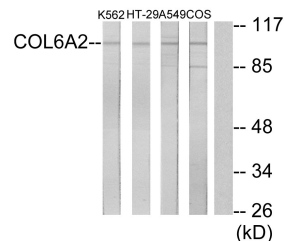
Gene ID	1292
Gene Symbol	COL6A2
Uniprot ID	CO6A2_HUMAN
Immunogen	The antiserum was produced against synthesized peptide derived from the human Collagen VI alpha2 at the amino acid range 691-740
Immunogen Region	691-740 aa
Specificity	COL6A2 Polyclonal Antibody detects endogenous levels of COL6A2 protein.
Immunogen Sequence	



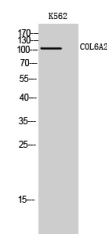
Western blot analysis of the lysates from HUVEC cells using ADRA1A antibody.



Immunohistochemistry analysis of paraffin-embedded human lung carcinoma tissue, using Collagen VI alpha2 Antibody. The picture on the right is blocked with the synthesized peptide.



Western blot analysis of lysates from K562, A549, HT-29, and COS7 cells, using Collagen VI alpha2 Antibody. The lane on the right is blocked with the synthesized peptide.



Western blot analysis of K562 cells using COL6A2 Polyclonal Antibody

This product is suitable for in-vitro studies under the RESEARCH USE ONLY [RUO] licence. This product must not be used as for diagnostic or other medical purposes.
St John's Laboratory Ltd, Knowledge Dock Business Centre, University Way, London, E16 2RD | Tel: 0208 223 3081