

Anti-COL25A1 antibody (101-150 aa) (STJ92386)

STJ92386

GENERAL INFORMATION

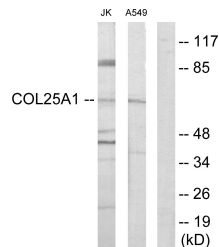
Product Type	Primary antibodies
Short Description	Rabbit polyclonal antibody anti-Collagen alpha-1XXV chain (101-150 aa) is suitable for use in Western Blot, Immunohistochemistry, Immunofluorescence and ELISA research applications.
Applications	WB/IHC/IF/ELISA
Host/Source	Rabbit
Reactivity	Human/Mouse

PRODUCT PROPERTIES

Clonality	Polyclonal
Clone ID	
Concentration	1 mg/mL
Conjugation	Unconjugated
Purification	The antibody was affinity-purified from rabbit antiserum by affinity-chromatography using epitope-specific immunogen.
Dilution Range	WB 1:500-1:2000 IHC 1:100-1:300 IF 1:200-1:1000 ELISA 1:20000
Formulation	Liquid in PBS containing 50% Glycerol, 0.5% BSA and 0.02% Sodium Azide.
Isotype	IgG
Storage Instruction	Store at -20°C for up to 1 year from the date of receipt, and avoid repeat freeze-thaw cycles.

TARGET INFORMATION

Gene ID	84570
Gene Symbol	COL25A1
Uniprot ID	COPA1_HUMAN
Immunogen	The antiserum was produced against synthesized peptide derived from the human Collagen XXV alpha1 at the amino acid range 101-150
Immunogen Region	101-150 aa
Specificity	COL25A1 Polyclonal Antibody detects endogenous levels of COL25A1 protein.
Immunogen Sequence	



Western blot analysis of lysates from Jurkat and A549 cells, using Collagen XXV alpha1 Antibody. The lane on the right is blocked with the synthesized peptide.