

## Anti-COL23A1 antibody (461-510 aa) (STJ92385)

STJ92385

### GENERAL INFORMATION

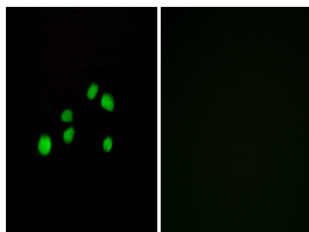
|                          |   |
|--------------------------|---|
| <b>Product Type</b>      | Primary antibodies  |
| <b>Short Description</b> | Rabbit polyclonal antibody anti-Collagen alpha-1XXIII chain (461-510 aa) is suitable for use in Immunofluorescence and ELISA research applications. |
| <b>Applications</b>      | IF/ELISA  |
| <b>Host/Source</b>       | Rabbit  |
| <b>Reactivity</b>        | Human/Mouse/Rat   |

### PRODUCT PROPERTIES

|                       |   |
|-----------------------|---|
| <b>Clonality</b>      | Polyclonal  |
| <b>Clone ID</b>       |   |
| <b>Concentration</b>  | 1 mg/mL   |
| <b>Conjugation</b>    | Unconjugated  |
| <b>Purification</b>   | The antibody was affinity-purified from rabbit antiserum by affinity-chromatography using epitope-specific immunogen. |
| <b>Dilution Range</b> | IF 1:200-1:1000<br>ELISA 1:10000  |
| <b>Formulation</b>    | Liquid in PBS containing 50% Glycerol, 0.5% BSA and 0.02% Sodium Azide.   |
| <b>Isotype</b>        | IgG   |
| <b>Storage</b>        | Store at -20°C for up to 1 year from the date of receipt, and avoid repeat freeze-thaw cycles.                        |
| <b>Instruction</b>    |   |

### TARGET INFORMATION

|                           |   |
|---------------------------|---|
| <b>Gene ID</b>            | 91522   |
| <b>Gene Symbol</b>        | COL23A1   |
| <b>Uniprot ID</b>         | CONA1_HUMAN   |
| <b>Immunogen</b>          | The antiserum was produced against synthesized peptide derived from the human Collagen XXIII alpha1 at the amino acid range 461-510 |
| <b>Immunogen Region</b>   | 461-510 aa  |
| <b>Specificity</b>        | COL23A1 Polyclonal Antibody detects endogenous levels of COL23A1 protein.   |
| <b>Immunogen Sequence</b> |   |



Immunofluorescence analysis of HepG2 cells, using Collagen XXIII alpha1 Antibody. The picture on the right is blocked with the synthesized peptide.

This product is suitable for in-vitro studies under the RESEARCH USE ONLY [RUO] licence. This product must not be used as for diagnostic or other medical purposes.  
St John's Laboratory Ltd, Knowledge Dock Business Centre, University Way, London, E16 2RD | Tel: 0208 223 3081