

## Anti-COL11A2 antibody (1211-1260 aa) (STJ92374)

STJ92374

### GENERAL INFORMATION

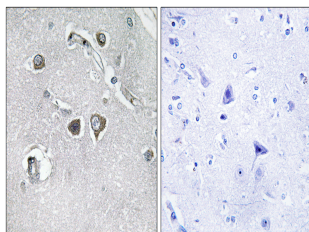
<b>Product Type</b>	Primary antibodies
<b>Short Description</b>	Rabbit polyclonal antibody anti-Collagen alpha-2XI chain (1211-1260 aa) is suitable for use in Western Blot, Immunohistochemistry, Immunofluorescence and ELISA research applications.
<b>Applications</b>	WB/IHC/IF/ELISA
<b>Host/Source</b>	Rabbit
<b>Reactivity</b>	Human/Mouse

### PRODUCT PROPERTIES

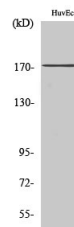
<b>Clonality</b>	Polyclonal
<b>Clone ID</b>	
<b>Concentration</b>	1 mg/mL
<b>Conjugation</b>	Unconjugated
<b>Purification</b>	The antibody was affinity-purified from rabbit antiserum by affinity-chromatography using epitope-specific immunogen.
<b>Dilution Range</b>	WB 1:500-1:2000 IHC 1:100-1:300 ELISA 1:20000 IF 1:50-200
<b>Formulation</b>	Liquid in PBS containing 50% Glycerol, 0.5% BSA and 0.02% Sodium Azide.
<b>Isotype</b>	IgG
<b>Storage Instruction</b>	Store at -20°C for up to 1 year from the date of receipt, and avoid repeat freeze-thaw cycles.

### TARGET INFORMATION

<b>Gene ID</b>	1302
<b>Gene Symbol</b>	COL11A2
<b>Uniprot ID</b>	COBA2_HUMAN
<b>Immunogen</b>	The antiserum was produced against synthesized peptide derived from the human Collagen XI alpha2 at the amino acid range 1211-1260
<b>Immunogen Region</b>	1211-1260 aa
<b>Specificity</b>	COL11A2 Polyclonal Antibody detects endogenous levels of COL11A2 protein.
<b>Immunogen Sequence</b>	



Immunohistochemistry analysis of paraffin-embedded human brain tissue, using Collagen XI alpha2 Antibody. The picture on the right is blocked with the synthesized peptide.



Western blot analysis of various cells using COL11A2 Polyclonal Antibody diluted at 1/4 500

This product is suitable for in-vitro studies under the RESEARCH USE ONLY [RUO] licence. This product must not be used as for diagnostic or other medical purposes.  
St John's Laboratory Ltd, Knowledge Dock Business Centre, University Way, London, E16 2RD | Tel: 0208 223 3081