

## Anti-MAF antibody (301-350 aa) (STJ92347)

STJ92347

### GENERAL INFORMATION

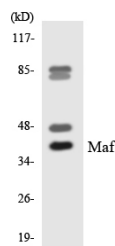
<b>Product Type</b>	Primary antibodies
<b>Short Description</b>	Rabbit polyclonal antibody anti-Transcription factor Maf (301-350 aa) is suitable for use in Western Blot and ELISA research applications.
<b>Applications</b>	WB/ELISA
<b>Host/Source</b>	Rabbit
<b>Reactivity</b>	Human/Mouse/Rat

### PRODUCT PROPERTIES

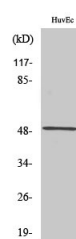
<b>Clonality</b>	Polyclonal
<b>Clone ID</b>	
<b>Concentration</b>	1 mg/mL
<b>Conjugation</b>	Unconjugated
<b>Purification</b>	The antibody was affinity-purified from rabbit antiserum by affinity-chromatography using epitope-specific immunogen.
<b>Dilution Range</b>	WB 1:500-1:2000 ELISA 1:10000
<b>Formulation</b>	Liquid in PBS containing 50% Glycerol, 0.5% BSA and 0.02% Sodium Azide.
<b>Isotype</b>	IgG
<b>Storage Instruction</b>	Store at -20°C for up to 1 year from the date of receipt, and avoid repeat freeze-thaw cycles.

### TARGET INFORMATION

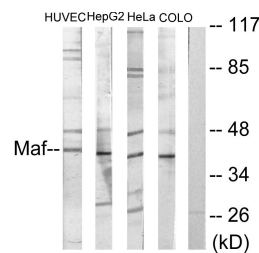
<b>Gene ID</b>	4094
<b>Gene Symbol</b>	MAF
<b>Uniprot ID</b>	MAF_HUMAN
<b>Immunogen</b>	The antiserum was produced against synthesized peptide derived from the human Maf at the amino acid range 301-350
<b>Immunogen Region</b>	301-350 aa
<b>Specificity</b>	c-Maf Polyclonal Antibody detects endogenous levels of c-Maf protein.
<b>Immunogen Sequence</b>	



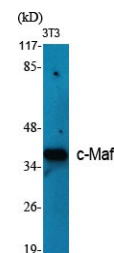
Western blot analysis of the lysates from HeLa cells using Maf antibody.



Western blot analysis of COLO205 cells using c-Maf Polyclonal Antibody diluted at 1:1000.



Western blot analysis of lysates from HUVEC, HepG2, HeLa, and COLO205 cells, using Maf Antibody. The lane on the right is blocked with the synthesized peptide.



Western blot analysis of various cells using c-Maf Polyclonal Antibody diluted at 1:1000.

This product is suitable for in-vitro studies under the RESEARCH USE ONLY [RUO] licence. This product must not be used as for diagnostic or other medical purposes.  
St John's Laboratory Ltd, Knowledge Dock Business Centre, University Way, London, E16 2RD | Tel: 0208 223 3081