

Anti-CLPTM1 antibody (200-249 aa) (STJ92345)

STJ92345

GENERAL INFORMATION

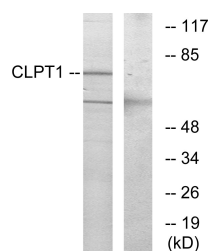
Product Type	Primary antibodies
Short Description	Rabbit polyclonal antibody anti-Putative lipid scramblase CLPTM1 (200-249 aa) is suitable for use in Western Blot, Immunofluorescence and ELISA research applications.
Applications	WB/IF/ELISA
Host/Source	Rabbit
Reactivity	Human/Mouse/Monkey

PRODUCT PROPERTIES

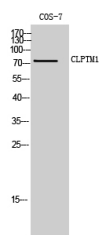
Clonality	Polyclonal
Clone ID	
Concentration	1 mg/mL
Conjugation	Unconjugated
Purification	The antibody was affinity-purified from rabbit antiserum by affinity-chromatography using epitope-specific immunogen.
Dilution Range	WB 1:500-1:2000 IF 1:200-1:1000 ELISA 1:10000
Formulation	Liquid in PBS containing 50% Glycerol, 0.5% BSA and 0.02% Sodium Azide.
Isotype	IgG
Storage Instruction	Store at -20°C for up to 1 year from the date of receipt, and avoid repeat freeze-thaw cycles.

TARGET INFORMATION

Gene ID	1209
Gene Symbol	CLPTM1
Uniprot ID	CLPT1_HUMAN
Immunogen	The antiserum was produced against synthesized peptide derived from the human CLPT1 at the amino acid range 200-249
Immunogen Region	200-249 aa
Specificity	CLPTM1 Polyclonal Antibody detects endogenous levels of CLPTM1 protein.
Immunogen Sequence	



Western blot analysis of lysates from COS7 cells, using CLPT1 Antibody. The lane on the right is blocked with the synthesized peptide.



Western blot analysis of COS-7 cells using CLPTM1 Polyclonal Antibody