

Anti-CLIP4 antibody (321-370 aa) (STJ92335)

STJ92335

GENERAL INFORMATION

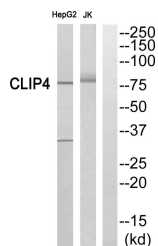
Product Type	Primary antibodies
Short Description	Rabbit polyclonal antibody anti-CAP-Gly domain-containing linker protein 4 (321-370 aa) is suitable for use in Western Blot and ELISA research applications.
Applications	WB/ELISA
Host/Source	Rabbit
Reactivity	Human/Rat/Mouse

PRODUCT PROPERTIES

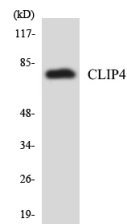
Clonality	Polyclonal
Clone ID	
Concentration	1 mg/mL
Conjugation	Unconjugated
Purification	The antibody was affinity-purified from rabbit antiserum by affinity-chromatography using epitope-specific immunogen.
Dilution Range	WB 1:500-1:2000 ELISA 1:40000
Formulation	Liquid in PBS containing 50% Glycerol, 0.5% BSA and 0.02% Sodium Azide.
Isotype	IgG
Storage	Store at -20°C for up to 1 year from the date of receipt, and avoid repeat freeze-thaw cycles.
Instruction	

TARGET INFORMATION

Gene ID	79745
Gene Symbol	CLIP4
Uniprot ID	CLIP4_HUMAN
Immunogen	The antiserum was produced against synthesized peptide derived from the human CLIP4 at the amino acid range 321-370
Immunogen Region	321-370 aa
Specificity	CLIP4 Polyclonal Antibody detects endogenous levels of CLIP4 protein.
Immunogen Sequence	



Western blot analysis of CLIP4 Antibody. The lane on the right is blocked with the CLIP4 peptide.



Western blot analysis of the lysates from HUVEC cells using CLIP4 antibody.



Western blot analysis of various cells using CLIP4 Polyclonal Antibody.

This product is suitable for in-vitro studies under the RESEARCH USE ONLY [RUO] licence. This product must not be used as for diagnostic or other medical purposes.
St John's Laboratory Ltd, Knowledge Dock Business Centre, University Way, London, E16 2RD | Tel: 0208 223 3081