

Anti-CLDN4 antibody (160-209 aa) (STJ92315)

STJ92315

GENERAL INFORMATION

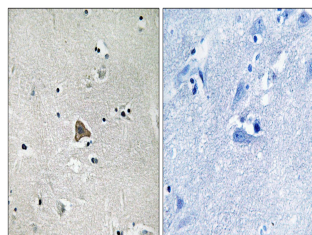
Product Type	Primary antibodies
Short Description	Rabbit polyclonal antibody anti-Claudin-4 (160-209 aa) is suitable for use in Western Blot, Immunohistochemistry, Immunofluorescence and ELISA research applications.
Applications	WB/IHC/IF/ELISA
Host/Source	Rabbit
Reactivity	Human/Rat/Mouse

PRODUCT PROPERTIES

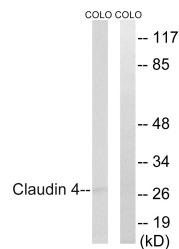
Clonality	Polyclonal
Clone ID	
Concentration	1 mg/mL
Conjugation	Unconjugated
Purification	The antibody was affinity-purified from rabbit antiserum by affinity-chromatography using epitope-specific immunogen.
Dilution Range	WB 1:500-1:2000 IHC 1:100-1:300 ELISA 1:5000 IF 1:50-200
Formulation	Liquid in PBS containing 50% Glycerol, 0.5% BSA and 0.02% Sodium Azide.
Isotype	IgG
Storage Instruction	Store at -20°C for up to 1 year from the date of receipt, and avoid repeat freeze-thaw cycles.

TARGET INFORMATION

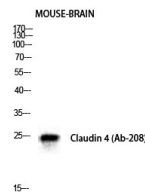
Gene ID	1364
Gene Symbol	CLDN4
Uniprot ID	CLD4_HUMAN
Immunogen	The antiserum was produced against synthesized peptide derived from the human Claudin 4 at the amino acid range 160-209
Immunogen Region	160-209 aa
Specificity	Claudin-4 Polyclonal Antibody detects endogenous levels of Claudin-4 protein.
Immunogen Sequence	



Immunohistochemistry analysis of paraffin-embedded human brain tissue, using Claudin 4 Antibody. The picture on the right is blocked with the synthesized peptide.



Western blot analysis of lysates from COLO cells, using Claudin 4 Antibody. The lane on the right is blocked with the synthesized peptide.



Western blot analysis of mouse-BRAIN cells using Claudin-4 Polyclonal Antibody diluted at 1:500