

Anti-CLDN19 antibody (81-130 aa) (STJ92311)

STJ92311

GENERAL INFORMATION

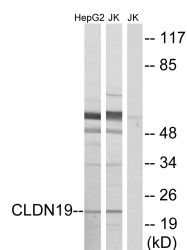
| | |
|--------------------------|---|
| Product Type | Primary antibodies |
| Short Description | Rabbit polyclonal antibody anti-Claudin-19 (81-130 aa) is suitable for use in Western Blot and ELISA research applications. |
| Applications | WB/ELISA |
| Host/Source | Rabbit |
| Reactivity | Human/Rat |

PRODUCT PROPERTIES

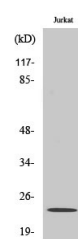
| | |
|----------------------------|---|
| Clonality | Polyclonal |
| Clone ID | |
| Concentration | 1 mg/mL |
| Conjugation | Unconjugated |
| Purification | The antibody was affinity-purified from rabbit antiserum by affinity-chromatography using epitope-specific immunogen. |
| Dilution Range | WB 1:500-1:2000 ELISA 1:10000 |
| Formulation | Liquid in PBS containing 50% Glycerol, 0.5% BSA and 0.02% Sodium Azide. |
| Isotype | IgG |
| Storage Instruction | Store at -20°C for up to 1 year from the date of receipt, and avoid repeat freeze-thaw cycles. |

TARGET INFORMATION

| | |
|---------------------------|---|
| Gene ID | 149461 |
| Gene Symbol | CLDN19 |
| Uniprot ID | CLD19_HUMAN |
| Immunogen | The antiserum was produced against synthesized peptide derived from the human CLDN19 at the amino acid range 81-130 |
| Immunogen Region | 81-130 aa |
| Specificity | Claudin-19 Polyclonal Antibody detects endogenous levels of Claudin-19 protein. |
| Immunogen Sequence | |



Western blot analysis of lysates from Jurkat and HepG2 cells, using CLDN19 Antibody. The lane on the right is blocked with the synthesized peptide.



Western blot analysis of various cells using Claudin-19 Polyclonal Antibody diluted at 1:1000.

This product is suitable for in-vitro studies under the RESEARCH USE ONLY [RUO] licence. This product must not be used as for diagnostic or other medical purposes.
St John's Laboratory Ltd, Knowledge Dock Business Centre, University Way, London, E16 2RD | Tel: 0208 223 3081