

Anti-CLDN10 antibody (179-228 aa) (STJ92309)

STJ92309

GENERAL INFORMATION

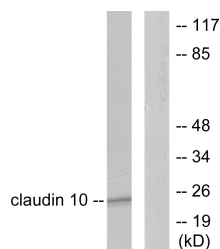
Product Type	Primary antibodies
Short Description	Rabbit polyclonal antibody anti-Claudin-10 (179-228 aa) is suitable for use in Western Blot, Immunohistochemistry, Immunofluorescence and ELISA research applications.
Applications	WB/IHC/IF/ELISA
Host/Source	Rabbit
Reactivity	Human/Mouse/Rat

PRODUCT PROPERTIES

Clonality	Polyclonal
Clone ID	
Concentration	1 mg/mL
Conjugation	Unconjugated
Purification	The antibody was affinity-purified from rabbit antiserum by affinity-chromatography using epitope-specific immunogen.
Dilution Range	WB 1:500-1:2000 IHC 1:100-1:300 IF 1:200-1:1000 ELISA 1:10000
Formulation	Liquid in PBS containing 50% Glycerol, 0.5% BSA and 0.02% Sodium Azide.
Isotype	IgG
Storage Instruction	Store at -20°C for up to 1 year from the date of receipt, and avoid repeat freeze-thaw cycles.

TARGET INFORMATION

Gene ID	9071
Gene Symbol	CLDN10
Uniprot ID	CLD10_HUMAN
Immunogen	The antiserum was produced against synthesized peptide derived from the human Claudin 10 at the amino acid range 179-228
Immunogen Region	179-228 aa
Specificity	Claudin-10 Polyclonal Antibody detects endogenous levels of Claudin-10 protein.
Immunogen Sequence	



Western blot analysis of lysates from LOVO cells, using Claudin 10 Antibody. The lane on the right is blocked with the synthesized peptide.