

Anti-CLDN1 antibody (162-211 aa) (STJ92308)

STJ92308

GENERAL INFORMATION

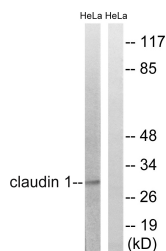
Product Type	Primary antibodies
Short Description	Rabbit polyclonal antibody anti-Claudin-1 (162-211 aa) is suitable for use in Western Blot and ELISA research applications.
Applications	WB/ELISA
Host/Source	Rabbit
Reactivity	Human/Mouse/Rat

PRODUCT PROPERTIES

Clonality	Polyclonal
Clone ID	
Concentration	1 mg/mL
Conjugation	Unconjugated
Purification	The antibody was affinity-purified from rabbit antiserum by affinity-chromatography using epitope-specific immunogen.
Dilution Range	WB 1:500-1:2000 ELISA 1:20000
Formulation	Liquid in PBS containing 50% Glycerol, 0.5% BSA and 0.02% Sodium Azide.
Isotype	IgG
Storage Instruction	Store at -20°C for up to 1 year from the date of receipt, and avoid repeat freeze-thaw cycles.

TARGET INFORMATION

Gene ID	9076
Gene Symbol	CLDN1
Uniprot ID	CLD1_HUMAN
Immunogen	The antiserum was produced against synthesized peptide derived from the human Claudin 1 at the amino acid range 162-211
Immunogen Region	162-211 aa
Specificity	Claudin-1 Polyclonal Antibody detects endogenous levels of Claudin-1 protein.
Immunogen Sequence	



Western blot analysis of lysates from HeLa cells, treated with Hu 2mM 24h, using Claudin 1 Antibody. The lane on the right is blocked with the synthesized peptide.

This product is suitable for in-vitro studies under the RESEARCH USE ONLY [RUO] licence. This product must not be used as for diagnostic or other medical purposes.
St John's Laboratory Ltd, Knowledge Dock Business Centre, University Way, London, E16 2RD | Tel: 0208 223 3081