

Anti-CLASP1 antibody (1171-1220 aa) (STJ92306)

STJ92306

GENERAL INFORMATION

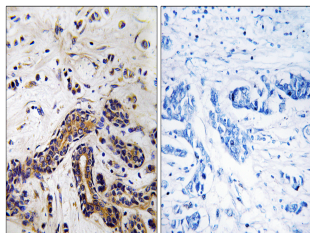
Product Type	Primary antibodies
Short Description	Rabbit polyclonal antibody anti-CLIP-associating protein 1 (1171-1220 aa) is suitable for use in Western Blot, Immunohistochemistry, Immunofluorescence and ELISA research applications.
Applications	WB/IHC/IF/ELISA
Host/Source	Rabbit
Reactivity	Human/Mouse

PRODUCT PROPERTIES

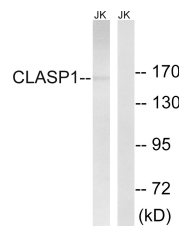
Clonality	Polyclonal
Clone ID	
Concentration	1 mg/mL
Conjugation	Unconjugated
Purification	The antibody was affinity-purified from rabbit antiserum by affinity-chromatography using epitope-specific immunogen.
Dilution Range	WB 1:500-1:2000 IHC 1:100-1:300 ELISA 1:40000 IF 1:50-200
Formulation	Liquid in PBS containing 50% Glycerol, 0.5% BSA and 0.02% Sodium Azide.
Isotype	IgG
Storage Instruction	Store at -20°C for up to 1 year from the date of receipt, and avoid repeat freeze-thaw cycles.

TARGET INFORMATION

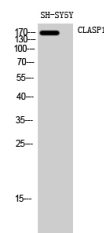
Gene ID	23332
Gene Symbol	CLASP1
Uniprot ID	CLAP1_HUMAN
Immunogen	The antiserum was produced against synthesized peptide derived from the human CLASP1 at the amino acid range 1171-1220
Immunogen Region	1171-1220 aa
Specificity	CLASP1 Polyclonal Antibody detects endogenous levels of CLASP1 protein.
Immunogen Sequence	



Immunohistochemistry analysis of paraffin-embedded human testis tissue, using CLASP1 Antibody. The picture on the right is blocked with the synthesized peptide.



Western blot analysis of lysates from Jurkat cells, using CLASP1 Antibody. The lane on the right is blocked with the synthesized peptide.



Western blot analysis of SH-SY5Y cells using CLASP1 Polyclonal Antibody diluted at 1:2000

This product is suitable for in-vitro studies under the RESEARCH USE ONLY [RUO] licence. This product must not be used as for diagnostic or other medical purposes.
St John's Laboratory Ltd, Knowledge Dock Business Centre, University Way, London, E16 2RD | Tel: 0208 223 3081