

Anti-CCR7 antibody (170-219 aa) (STJ92303)

STJ92303

GENERAL INFORMATION

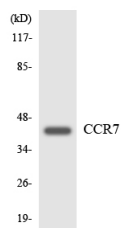
Product Type	Primary antibodies
Short Description	Rabbit polyclonal antibody anti-C-C chemokine receptor type 7 (170-219 aa) is suitable for use in Western Blot, Immunofluorescence and ELISA research applications.
Applications	WB/IF/ELISA
Host/Source	Rabbit
Reactivity	Human/Monkey

PRODUCT PROPERTIES

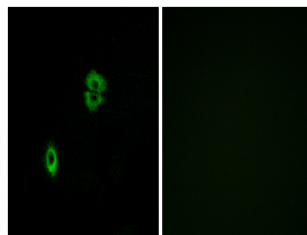
Clonality	Polyclonal
Clone ID	
Concentration	1 mg/mL
Conjugation	Unconjugated
Purification	The antibody was affinity-purified from rabbit antiserum by affinity-chromatography using epitope-specific immunogen.
Dilution Range	WB 1:500-1:2000 IF 1:200-1:1000 ELISA 1:40000
Formulation	Liquid in PBS containing 50% Glycerol, 0.5% BSA and 0.02% Sodium Azide.
Isotype	IgG
Storage Instruction	Store at -20°C for up to 1 year from the date of receipt, and avoid repeat freeze-thaw cycles.

TARGET INFORMATION

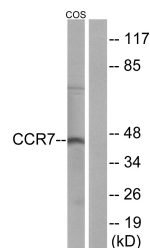
Gene ID	1236
Gene Symbol	CCR7
Uniprot ID	CCR7_HUMAN
Immunogen	The antiserum was produced against synthesized peptide derived from the human CCR7 at the amino acid range 170-219
Immunogen Region	170-219 aa
Specificity	CCR-7 Polyclonal Antibody detects endogenous levels of CCR-7 protein.
Immunogen Sequence	



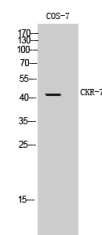
Western blot analysis of the lysates from HeLa cells using CCR7 antibody.



Immunofluorescence analysis of A549 cells, using CCR7 Antibody. The picture on the right is blocked with the synthesized peptide.



Western blot analysis of lysates from COS7 cells, using CCR7 Antibody. The lane on the right is blocked with the synthesized peptide.



Western blot analysis of COS-7 cells using CCR-7 Polyclonal Antibody

This product is suitable for in-vitro studies under the RESEARCH USE ONLY [RUO] licence. This product must not be used as for diagnostic or other medical purposes.
St John's Laboratory Ltd, Knowledge Dock Business Centre, University Way, London, E16 2RD | Tel: 0208 223 3081