

Anti-CIDEB antibody (91-140 aa) (STJ92293)

STJ92293

GENERAL INFORMATION

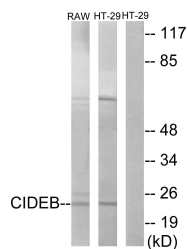
Product Type	Primary antibodies
Short Description	Rabbit polyclonal antibody anti-Lipid transferase CIDEB (91-140 aa) is suitable for use in Western Blot, Immunohistochemistry, Immunofluorescence and ELISA research applications.
Applications	WB/IHC/IF/ELISA
Host/Source	Rabbit
Reactivity	Human/Mouse

PRODUCT PROPERTIES

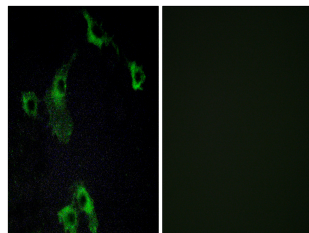
Clonality	Polyclonal
Clone ID	
Concentration	1 mg/mL
Conjugation	Unconjugated
Purification	The antibody was affinity-purified from rabbit antiserum by affinity-chromatography using epitope-specific immunogen.
Dilution Range	WB 1:500-1:2000 IHC 1:100-1:300 IF 1:200-1:1000 ELISA 1:40000
Formulation	Liquid in PBS containing 50% Glycerol, 0.5% BSA and 0.02% Sodium Azide.
Isotype	IgG
Storage Instruction	Store at -20°C for up to 1 year from the date of receipt, and avoid repeat freeze-thaw cycles.

TARGET INFORMATION

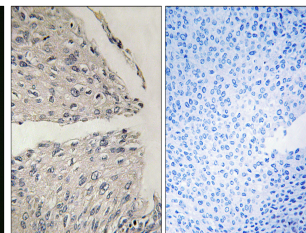
Gene ID	27141
Gene Symbol	CIDEB
Uniprot ID	CIDEB_HUMAN
Immunogen	The antiserum was produced against synthesized peptide derived from the human CIDEB at the amino acid range 91-140
Immunogen Region	91-140 aa
Specificity	CIDE-B Polyclonal Antibody detects endogenous levels of CIDE-B protein.
Immunogen Sequence	



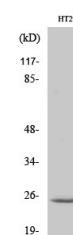
Western blot analysis of lysates from HT-29 and RAW264.7 cells, using CIDEB Antibody. The lane on the right is blocked with the synthesized peptide.



Immunofluorescence analysis of COS7 cells, using CIDEB Antibody. The picture on the right is blocked with the synthesized peptide.



Immunohistochemistry analysis of paraffin-embedded human cervix caecinoma tissue, using CIDEB Antibody. The picture on the right is blocked with the synthesized peptide.



Western blot analysis of various cells using CIDE-B Polyclonal Antibody