

Anti-CIB3 antibody (138-187 aa) (STJ92291)

STJ92291

GENERAL INFORMATION

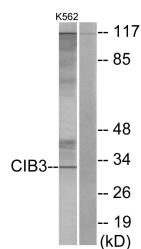
Product Type	Primary antibodies
Short Description	Rabbit polyclonal antibody anti-Calcium and integrin-binding family member 3 (138-187 aa) is suitable for use in Western Blot and ELISA research applications.
Applications	WB/ELISA
Host/Source	Rabbit
Reactivity	Human/Mouse

PRODUCT PROPERTIES

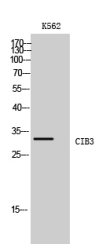
Clonality	Polyclonal
Clone ID	
Concentration	1 mg/mL
Conjugation	Unconjugated
Purification	The antibody was affinity-purified from rabbit antiserum by affinity-chromatography using epitope-specific immunogen.
Dilution Range	WB 1:500-1:2000 ELISA 1:20000
Formulation	Liquid in PBS containing 50% Glycerol, 0.5% BSA and 0.02% Sodium Azide.
Isotype	IgG
Storage	Store at -20°C for up to 1 year from the date of receipt, and avoid repeat freeze-thaw cycles.
Instruction	

TARGET INFORMATION

Gene ID	117286
Gene Symbol	CIB3
Uniprot ID	CIB3_HUMAN
Immunogen	The antiserum was produced against synthesized peptide derived from the human CIB3 at the amino acid range 138-187
Immunogen Region	138-187 aa
Specificity	CIB3 Polyclonal Antibody detects endogenous levels of CIB3 protein.
Immunogen Sequence	



Western blot analysis of lysates from K562 cells, using CIB3 Antibody. The lane on the right is blocked with the synthesized peptide.



Western blot analysis of K562 cells using CIB3 Polyclonal Antibody

This product is suitable for in-vitro studies under the RESEARCH USE ONLY [RUO] licence. This product must not be used as for diagnostic or other medical purposes.
St John's Laboratory Ltd, Knowledge Dock Business Centre, University Way, London, E16 2RD | Tel: 0208 223 3081