

## Anti-CHSY1 antibody (341-390 aa) (STJ92288)

STJ92288

### GENERAL INFORMATION

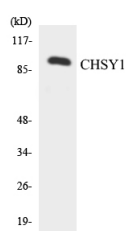
<b>Product Type</b>	Primary antibodies
<b>Short Description</b>	Rabbit polyclonal antibody anti-Chondroitin sulfate synthase 1 (341-390 aa) is suitable for use in Western Blot, Immunohistochemistry, Immunofluorescence and ELISA research applications.
<b>Applications</b>	WB/IHC/IF/ELISA
<b>Host/Source</b>	Rabbit
<b>Reactivity</b>	Human/Mouse

### PRODUCT PROPERTIES

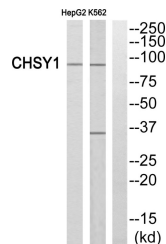
<b>Clonality</b>	Polyclonal
<b>Clone ID</b>	
<b>Concentration</b>	1 mg/mL
<b>Conjugation</b>	Unconjugated
<b>Purification</b>	The antibody was affinity-purified from rabbit antiserum by affinity-chromatography using epitope-specific immunogen.
<b>Dilution Range</b>	WB 1:500-1:2000 IHC 1:100-1:300 ELISA 1:10000 IF 1:50-200
<b>Formulation</b>	Liquid in PBS containing 50% Glycerol, 0.5% BSA and 0.02% Sodium Azide.
<b>Isotype</b>	IgG
<b>Storage Instruction</b>	Store at -20°C for up to 1 year from the date of receipt, and avoid repeat freeze-thaw cycles.

### TARGET INFORMATION

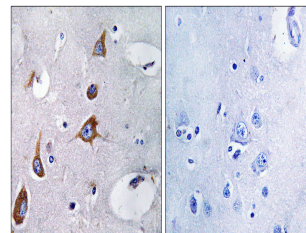
<b>Gene ID</b>	22856
<b>Gene Symbol</b>	CHSY1
<b>Uniprot ID</b>	CHSS1_HUMAN
<b>Immunogen</b>	The antiserum was produced against synthesized peptide derived from the human CHSY1 at the amino acid range 341-390
<b>Immunogen</b>	341-390 aa
<b>Region</b>	
<b>Specificity</b>	CHSY1 Polyclonal Antibody detects endogenous levels of CHSY1 protein.
<b>Immunogen Sequence</b>	



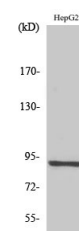
Western blot analysis of the lysates from HepG2 cells using CHSY1 antibody.



Western blot analysis of CHSY1 Antibody. The lane on the right is blocked with the CHSY1 peptide.



Immunohistochemistry analysis of paraffin-embedded human brain, using CHSY1 Antibody. The lane on the right is blocked with the CHSY1 peptide.



Western blot analysis of various cells using CHSY1 Polyclonal Antibody