

Anti-CHST13 antibody (211-260 aa) (STJ92284)

STJ92284

GENERAL INFORMATION

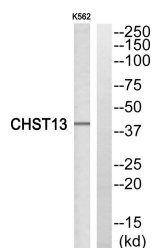
Product Type	Primary antibodies
Short Description	Rabbit polyclonal antibody anti-Carbohydrate sulfotransferase 13 (211-260 aa) is suitable for use in Western Blot, Immunohistochemistry, Immunofluorescence and ELISA research applications.
Applications	WB/IHC/IF/ELISA
Host/Source	Rabbit
Reactivity	Human/Rat/Mouse

PRODUCT PROPERTIES

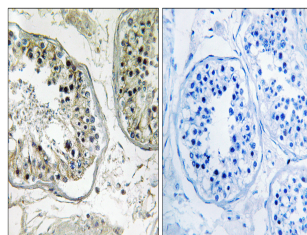
Clonality	Polyclonal
Clone ID	
Concentration	1 mg/mL
Conjugation	Unconjugated
Purification	The antibody was affinity-purified from rabbit antiserum by affinity-chromatography using epitope-specific immunogen.
Dilution Range	WB 1:500-1:2000 IHC 1:100-1:300 ELISA 1:40000 IF 1:50-200
Formulation	Liquid in PBS containing 50% Glycerol, 0.5% BSA and 0.02% Sodium Azide.
Isotype	IgG
Storage Instruction	Store at -20°C for up to 1 year from the date of receipt, and avoid repeat freeze-thaw cycles.

TARGET INFORMATION

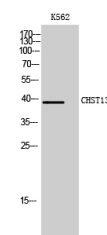
Gene ID	166012
Gene Symbol	CHST13
Uniprot ID	CHSTD_HUMAN
Immunogen	The antiserum was produced against synthesized peptide derived from the human CHST13 at the amino acid range 211-260
Immunogen Region	211-260 aa
Specificity	CHST13 Polyclonal Antibody detects endogenous levels of CHST13 protein.
Immunogen Sequence	



Western blot analysis of CHST13 Antibody. The lane on the right is blocked with the CHST13 peptide.



Immunohistochemistry analysis of paraffin-embedded human testis, using CHST13 Antibody. The lane on the right is blocked with the CHST13 peptide.



Western blot analysis of K562 cells using CHST13 Polyclonal Antibody.