

Anti-CHKB antibody (301-350 aa) (STJ92275)

STJ92275

GENERAL INFORMATION

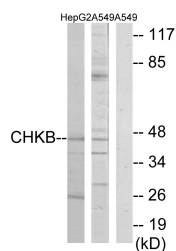
Product Type	Primary antibodies
Short Description	Rabbit polyclonal antibody anti-Choline/ethanolamine kinase (301-350 aa) is suitable for use in Western Blot, Immunohistochemistry, Immunofluorescence and ELISA research applications.
Applications	WB/IHC/IF/ELISA
Host/Source	Rabbit
Reactivity	Human/Rat/Mouse

PRODUCT PROPERTIES

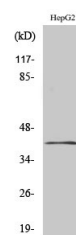
Clonality	Polyclonal
Clone ID	
Concentration	1 mg/mL
Conjugation	Unconjugated
Purification	The antibody was affinity-purified from rabbit antiserum by affinity-chromatography using epitope-specific immunogen.
Dilution Range	WB 1:500-1:2000 IHC 1:100-1:300 ELISA 1:20000 IF 1:50-200
Formulation	Liquid in PBS containing 50% Glycerol, 0.5% BSA and 0.02% Sodium Azide.
Isotype	IgG
Storage Instruction	Store at -20°C for up to 1 year from the date of receipt, and avoid repeat freeze-thaw cycles.

TARGET INFORMATION

Gene ID	1120
Gene Symbol	CHKB
Uniprot ID	CHKB_HUMAN
Immunogen	The antiserum was produced against synthesized peptide derived from the human CHKB at the amino acid range 301-350
Immunogen Region	301-350 aa
Specificity	ChoKB Polyclonal Antibody detects endogenous levels of ChoKB protein.
Immunogen Sequence	



Western blot analysis of lysates from HepG2 and A549 cells, using CHKB Antibody. The lane on the right is blocked with the synthesized peptide.



Western blot analysis of various cells using ChoKB Polyclonal Antibody.