

## Anti-CGI-43 antibody (411-460 aa) (STJ92255)

STJ92255

### GENERAL INFORMATION

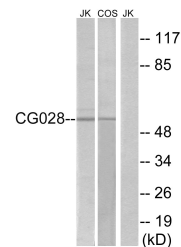
<b>Product Type</b>	Primary antibodies
<b>Short Description</b>	Rabbit polyclonal antibody anti-Vacuolar fusion protein CCZ1 homolog and Vacuolar fusion protein CCZ1 homolog B (411-460 aa) is suitable for use in Western Blot and ELISA research applications.
<b>Applications</b>	WB/ELISA
<b>Host/Source</b>	Rabbit
<b>Reactivity</b>	Human/Mouse/Monkey

### PRODUCT PROPERTIES

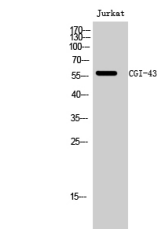
<b>Clonality</b>	Polyclonal
<b>Clone ID</b>	
<b>Concentration</b>	1 mg/mL
<b>Conjugation</b>	Unconjugated
<b>Purification</b>	The antibody was affinity-purified from rabbit antiserum by affinity-chromatography using epitope-specific immunogen.
<b>Dilution</b>	WB 1:500-1:2000
<b>Range</b>	ELISA 1:10000
<b>Formulation</b>	Liquid in PBS containing 50% Glycerol, 0.5% BSA and 0.02% Sodium Azide.
<b>Isotype</b>	IgG
<b>Storage</b>	Store at -20°C for up to 1 year from the date of receipt, and avoid repeat freeze-thaw cycles.
<b>Instruction</b>	

### TARGET INFORMATION

<b>Gene ID</b>	<a href="#">221960/51622</a> <a href="#">221960/51622</a>
<b>Gene Symbol</b>	<a href="#">CCZ1</a> <a href="#">CCZ1B</a>
<b>Uniprot ID</b>	<a href="#">CCZ1_HUMAN</a> <a href="#">CCZ1B_HUMAN</a>
<b>Immunogen</b>	The antiserum was produced against synthesized peptide derived from the human CG028 at the amino acid range 411-460
<b>Immunogen Region</b>	411-460 aa
<b>Specificity</b>	CGI-43 Polyclonal Antibody detects endogenous levels of CGI-43 protein.
<b>Immunogen Sequence</b>	



Western blot analysis of lysates from Jurkat and COS cells, using CG028 Antibody. The lane on the right is blocked with the synthesized peptide.



Western blot analysis of Jurkat cells using CGI-43 Polyclonal Antibody diluted at 1:1/4 500