

Anti-CBLN4 antibody (141-190 aa) (STJ92236)

STJ92236

GENERAL INFORMATION

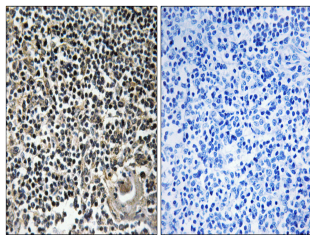
Product Type	Primary antibodies
Short Description	Rabbit polyclonal antibody anti-Cerebellin-4 (141-190 aa) is suitable for use in Western Blot, Immunohistochemistry, Immunofluorescence and ELISA research applications.
Applications	WB/IHC/IF/ELISA
Host/Source	Rabbit
Reactivity	Human/Mouse/Monkey

PRODUCT PROPERTIES

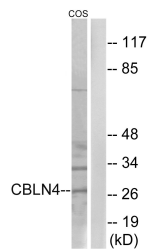
Clonality	Polyclonal
Clone ID	
Concentration	1 mg/mL
Conjugation	Unconjugated
Purification	The antibody was affinity-purified from rabbit antiserum by affinity-chromatography using epitope-specific immunogen.
Dilution Range	WB 1:500-1:2000 IHC 1:100-1:300 ELISA 1:40000 IF 1:50-200
Formulation	Liquid in PBS containing 50% Glycerol, 0.5% BSA and 0.02% Sodium Azide.
Isotype	IgG
Storage Instruction	Store at -20°C for up to 1 year from the date of receipt, and avoid repeat freeze-thaw cycles.

TARGET INFORMATION

Gene ID	140689
Gene Symbol	CBLN4
Uniprot ID	CBLN4_HUMAN
Immunogen	The antiserum was produced against synthesized peptide derived from the human CBLN4 at the amino acid range 141-190
Immunogen Region	141-190 aa
Specificity	Cerebellin 4 Polyclonal Antibody detects endogenous levels of Cerebellin 4 protein.
Immunogen Sequence	



Immunohistochemistry analysis of paraffin-embedded human thymus gland tissue, using CBLN4 Antibody. The picture on the right is blocked with the synthesized peptide.



Western blot analysis of lysates from COS cells, using CBLN4 Antibody. The lane on the right is blocked with the synthesized peptide.



Western blot analysis of various cells using Cerebellin 4 Polyclonal Antibody