

## Anti-CEP97 antibody (581-630 aa) (STJ92232)

STJ92232

### GENERAL INFORMATION

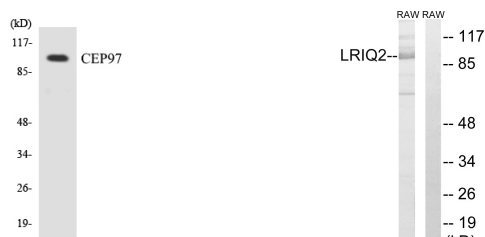
<b>Product Type</b>	Primary antibodies
<b>Short Description</b>	Rabbit polyclonal antibody anti-Centrosomal protein of 97 kDa (581-630 aa) is suitable for use in Western Blot, Immunohistochemistry, Immunofluorescence and ELISA research applications.
<b>Applications</b>	WB/IHC/IF/ELISA
<b>Host/Source</b>	Rabbit
<b>Reactivity</b>	Human/Mouse

### PRODUCT PROPERTIES

<b>Clonality</b>	Polyclonal
<b>Clone ID</b>	
<b>Concentration</b>	1 mg/mL
<b>Conjugation</b>	Unconjugated
<b>Purification</b>	The antibody was affinity-purified from rabbit antiserum by affinity-chromatography using epitope-specific immunogen.
<b>Dilution Range</b>	WB 1:500-1:2000 IHC 1:100-1:300 ELISA 1:20000 IF 1:50-200
<b>Formulation</b>	Liquid in PBS containing 50% Glycerol, 0.5% BSA and 0.02% Sodium Azide.
<b>Isotype</b>	IgG
<b>Storage Instruction</b>	Store at -20°C for up to 1 year from the date of receipt, and avoid repeat freeze-thaw cycles.

### TARGET INFORMATION

<b>Gene ID</b>	79598
<b>Gene Symbol</b>	CEP97
<b>Uniprot ID</b>	CEP97_HUMAN
<b>Immunogen</b>	The antiserum was produced against synthesized peptide derived from the human CEP97 at the amino acid range 581-630
<b>Immunogen Region</b>	581-630 aa
<b>Specificity</b>	Cep97 Polyclonal Antibody detects endogenous levels of Cep97 protein.
<b>Immunogen Sequence</b>	



Western blot analysis of the lysates from COLO205 cells using CEP97 antibody.

Western blot analysis of lysates from RAW264.7 cells, using CEP97 Antibody. The lane on the right is blocked with the synthesized peptide.