

Anti-CENPA antibody (1-50 aa) (STJ92218)

STJ92218

GENERAL INFORMATION

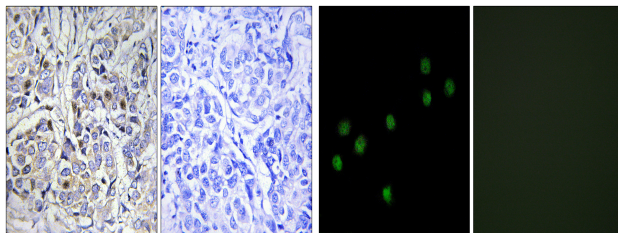
Product Type	Primary antibodies
Short Description	Rabbit polyclonal antibody anti-Histone H3-like centromeric protein A (1-50 aa) is suitable for use in Immunohistochemistry, Immunofluorescence and ELISA research applications.
Applications	IHC/IF/ELISA
Host/Source	Rabbit
Reactivity	Human/Rat/Mouse

PRODUCT PROPERTIES

Clonality	Polyclonal
Clone ID	
Concentration	1 mg/mL
Conjugation	Unconjugated
Purification	The antibody was affinity-purified from rabbit antiserum by affinity-chromatography using epitope-specific immunogen.
Dilution Range	IHC 1:100-1:300 IF 1:200-1:1000 ELISA 1:10000
Formulation	Liquid in PBS containing 50% Glycerol, 0.5% BSA and 0.02% Sodium Azide.
Isotype	IgG
Storage Instruction	Store at -20°C for up to 1 year from the date of receipt, and avoid repeat freeze-thaw cycles.

TARGET INFORMATION

Gene ID	1058
Gene Symbol	CENPA
Uniprot ID	CENPA_HUMAN
Immunogen	The antiserum was produced against synthesized peptide derived from the human Centromeric Protein A at the amino acid range 1-50
Immunogen Region	1-50 aa
Specificity	CENP-A Polyclonal Antibody detects endogenous levels of CENP-A protein.
Immunogen Sequence	



Immunohistochemistry analysis of paraffin-embedded human breast carcinoma tissue, using Centromeric Protein A Antibody. The picture on the right is blocked with the synthesized peptide.

Immunofluorescence analysis of HepG2 cells, using Centromeric Protein A Antibody. The picture on the right is blocked with the synthesized peptide.